

## ENTPD5(CD39L4) antibody

Catalog No: #22045

Orders: order@signalwayantibody.com

Support: tech@signalwayantibody.com

## Description

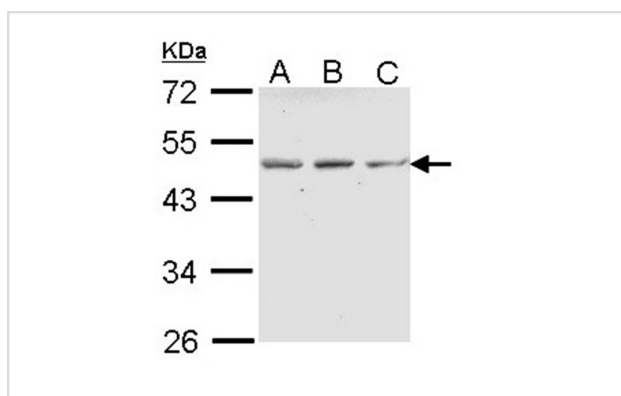
Product Name	ENTPD5(CD39L4) antibody
Host Species	Rabbit
Clonality	Polyclonal
Purification	Purified by antigen-affinity chromatography.
Applications	WB
Species Reactivity	Hu
Immunogen Type	Recombinant protein
Immunogen Description	Recombinant protein fragment contain a sequence corresponding to a region within amino acids 1 and 161 of human ENTPD5
Target Name	ENTPD5(CD39L4)
Accession No.	Swiss-Prot:O75356Gene ID:957
Uniprot	O75356
GeneID	957;
Concentration	1mg/ml
Formulation	Supplied in 0.1M Tris-buffered saline with 10% Glycerol (pH7.0). 0.01% Thimerosal was added as a preservative.
Storage	Store at -20°C for long term preservation (recommended). Store at 4°C for short term use.

## Application Details

Predicted MW: 48kd

Western blotting: 1:500-1:3000

## Images



Sample (30 ug of whole cell lysate)

A: A431

B: H1299

C: HeLa

10% SDS PAGE

Primary antibody diluted at 1: 1000

## Background

The protein encoded by this gene is similar to E-type nucleotidases (NTPases)/ecto-ATPase/apyrases. NTPases, such as CD39, mediate catabolism of extracellular nucleotides. ENTPD5 contains 4 apyrase-conserved regions which is characteristic of NTPases. [provided by RefSeq]

---

Note: This product is for in vitro research use only