

ERBB4 Antibody

Catalog No: #35681

Orders: order@signalwayantibody.com

Support: tech@signalwayantibody.com

Description

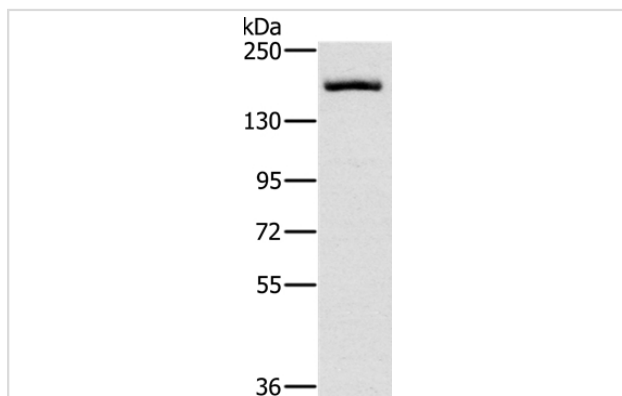
Product Name	ERBB4 Antibody
Host Species	Rabbit
Clonality	Polyclonal
Purification	Antigen affinity purification.
Applications	WB IHC
Species Reactivity	Hu Ms Rt
Specificity	The antibody detects endogenous levels of total ERBB4 protein.
Immunogen Type	Recombinant Protein
Immunogen Description	Fusion protein corresponding to a region derived from internal residues of human v-erb-b2 avian erythroblastic leukemia viral oncogene homolog 4
Target Name	ERBB4
Other Names	HER4; ALS19; p180erbB4
Accession No.	Swiss-Prot#: Q15303NCBI Gene ID: 2066Gene Accssion: BC112199/Q15303
Uniprot	Q15303
GeneID	2066;
SDS-PAGE MW	147kd
Concentration	1.7mg/ml
Formulation	Rabbit IgG in pH7.4 PBS, 0.05% NaN ₃ , 40% Glycerol.
Storage	Store at -20°C

Application Details

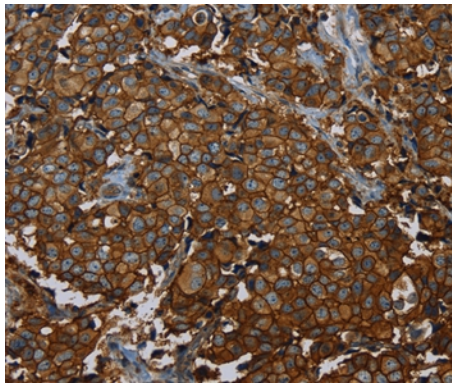
Western blotting: 1:200-1:1000

Immunohistochemistry: 1:50-1:200

Images



Gel: 6%SDS-PAGE
 Lysate: 40ug Hela cell
 Primary antibody: 1/200 dilution
 Secondary antibody dilution: 1/8000
 Exposure time: 5 seconds



Immunohistochemical analysis of paraffin-embedded Human breast cancer tissue using #35681 at dilution 1/40.

Background

This gene is a member of the Tyr protein kinase family and the epidermal growth factor receptor subfamily. It encodes a single-pass type I membrane protein with multiple cysteine rich domains, a transmembrane domain, a tyrosine kinase domain, a phosphatidylinositol-3 kinase binding site and a PDZ domain binding motif. The protein binds to and is activated by neuregulins and other factors and induces a variety of cellular responses including mitogenesis and differentiation.?

Note: This product is for in vitro research use only