

## Description

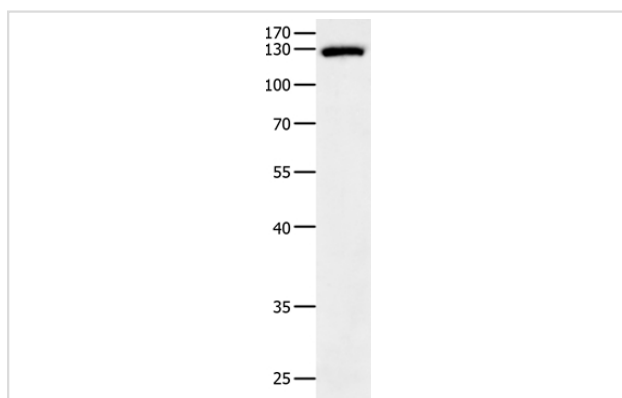
Product Name	EGF Antibody
Host Species	Rabbit
Clonality	Polyclonal
Purification	Antigen affinity purification.
Applications	WB IHC
Species Reactivity	Hu Ms
Specificity	The antibody detects endogenous levels of total EGF protein.
Immunogen Type	Recombinant Protein
Immunogen Description	Fusion protein corresponding to a region derived from internal residues of human epidermal growth factor
Target Name	EGF
Other Names	URG; HOMG4
Accession No.	Swiss-Prot#: P01133NCBI Gene ID: 1950Gene Accssion: BC113461
Uniprot	P01133
GeneID	1950;
SDS-PAGE MW	134kd
Concentration	1mg/ml
Formulation	Rabbit IgG in pH7.4 PBS, 0.05% NaN <sub>3</sub> , 40% Glycerol.
Storage	Store at -20°C

## Application Details

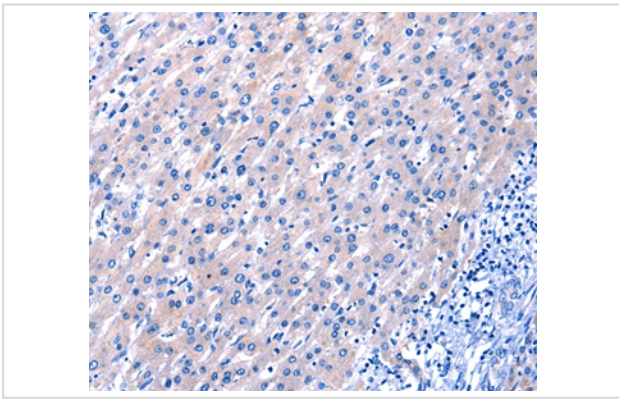
Western blotting: 1:500-1:2000

Immunohistochemistry: 1:25-1:100

## Images



Gel: 8%SDS-PAGE  
 Lysates (from left to right): Mouse liver tissue  
 Amount of lysate: 40ug per lane  
 Primary antibody: 1/500 dilution  
 Secondary antibody dilution: 1/8000  
 Exposure time: 20 seconds



Immunohistochemical analysis of paraffin-embedded Human liver cancer tissue using #35720 at dilution 1/25.

## Background

This gene encodes a member of the epidermal growth factor superfamily. The encoded protein is synthesized as a large precursor molecule that is proteolytically cleaved to generate the 53-amino acid epidermal growth factor peptide. This protein acts a potent mitogenic factor that plays an important role in the growth, proliferation and differentiation of numerous cell types. This protein acts by binding the high affinity cell surface receptor, epidermal growth factor receptor. Defects in this gene are the cause of hypomagnesemia type 4. Dysregulation of this gene has been associated with the growth and progression of certain cancers. Alternate splicing results in multiple transcript variants

Note: This product is for in vitro research use only