

Description

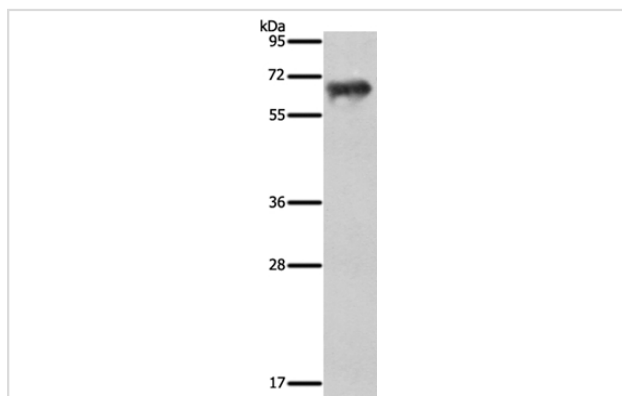
Product Name	FSHR Antibody
Host Species	Rabbit
Clonality	Polyclonal
Purification	Antigen affinity purification.
Applications	WB IHC
Species Reactivity	Hu
Specificity	The antibody detects endogenous levels of total FSHR protein.
Immunogen Type	Recombinant Protein
Immunogen Description	Fusion protein corresponding to a region derived from internal residues of human follicle stimulating hormone receptor
Target Name	FSHR
Other Names	LGR1; ODG1; FSHRO
Accession No.	Swiss-Prot#: P23945NCBI Gene ID: 2492Gene Accssion: BC118548
Uniprot	P23945
GeneID	2492;
SDS-PAGE MW	71kd
Concentration	1.9mg/ml
Formulation	Rabbit IgG in pH7.4 PBS, 0.05% NaN ₃ , 40% Glycerol.
Storage	Store at -20°C

Application Details

Western blotting: 1:500-1:2000

Immunohistochemistry: 1:100-1:300

Images



Gel: 10%SDS-PAGE

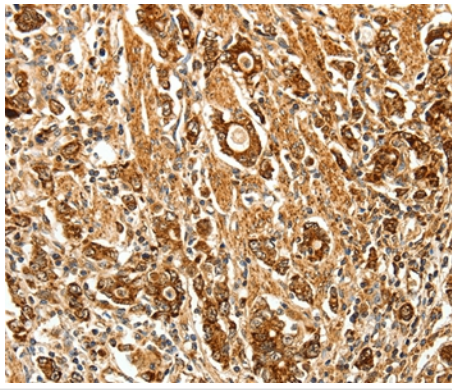
Lysates (from left to right): Human ovarian cancer tissue

Amount of lysate: 40ug per lane

Primary antibody: 1/950 dilution

Secondary antibody dilution: 1/8000

Exposure time: 40 seconds



Immunohistochemical analysis of paraffin-embedded Human gastric cancer tissue using #35743 at dilution 1/70.

Background

The protein encoded by this gene belongs to family 1 of G-protein coupled receptors. It is the receptor for follicle stimulating hormone and functions in gonad development. Mutations in this gene cause ovarian dysgenesis type 1, and also ovarian hyperstimulation syndrome. Alternative splicing results in multiple transcript variants. Its activation is necessary for the hormonal functioning of FSH. FSHRs are found in the ovary, testis, and uterus.

Note: This product is for in vitro research use only