

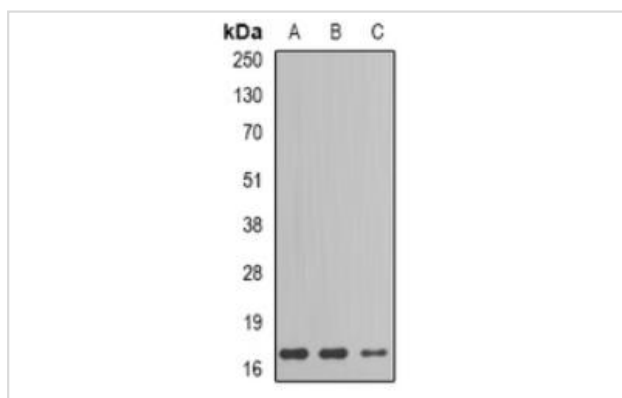
Description

Product Name	GIP Antibody
Host Species	Rabbit
Clonality	Polyclonal
Purification	Antigen affinity purification.
Applications	WB IHC
Species Reactivity	Hu,Ms,Rat
Specificity	The antibody detects endogenous levels of total GIP protein.
Immunogen Type	Recombinant Protein
Immunogen Description	Fusion protein corresponding to a region derived from internal residues of human gastric inhibitory polypeptide
Target Name	GIP
Other Names	GIP; Gastric inhibitory polypeptide;Glucose-dependent insulinotropic polypeptide
Accession No.	Swiss-Prot#: P09681NCBI Gene ID: 2695Gene Accssion: BC069663
Uniprot	P09681
GeneID	2695;
SDS-PAGE MW	17kd
Concentration	0.5mg/ml
Formulation	Liquid in 0.42% Potassium phosphate, 0.87% Sodium chloride, pH 7.3, 30% glycerol, and 0.01% sodium azide.
Storage	Shipped at 4°C. Upon delivery aliquot and store at -20°C for one year. Avoid freeze/thaw cycles.

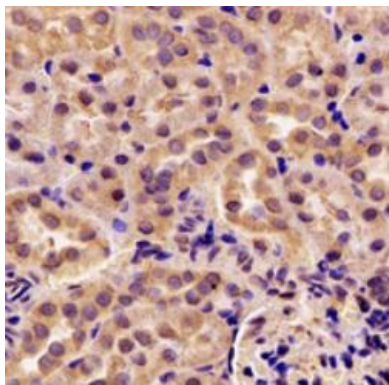
Application Details

Western blotting: 1:500-1:2000 IHC 1:50 - 1:200

Images



Western blot analysis of GIP expression in HepG2 (A), mouse liver (B), rat liver (C) whole cell lysates.



Immunohistochemical analysis of GIP staining in rat kidney formalin fixed paraffin embedded tissue section. The section was pre-treated using heat mediated antigen retrieval with sodium citrate buffer (pH 6.0). The section was then incubated with the antibody at room temperature and detected using an HRP conjugated compact polymer system. DAB was used as the chromogen. The section was then counterstained with haematoxylin and mounted with DPX.

Background

This gene encodes an incretin hormone and belongs to the glucagon superfamily. The encoded protein is important in maintaining glucose homeostasis as it is a potent stimulator of insulin secretion from pancreatic beta-cells following food ingestion and nutrient absorption. This gene stimulates insulin secretion via its G protein-coupled receptor activation of adenylyl cyclase and other signal transduction pathways. It is a relatively poor inhibitor of gastric acid secretion.

Note: This product is for in vitro research use only