

## ITGB3 Antibody

Catalog No: #35782

Orders: order@signalwayantibody.com

Support: tech@signalwayantibody.com

## Description

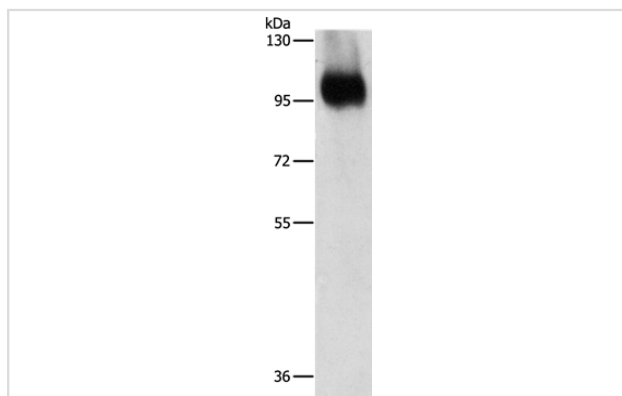
Product Name	ITGB3 Antibody
Host Species	Rabbit
Clonality	Polyclonal
Purification	Antigen affinity purification.
Applications	WB IHC
Species Reactivity	Hu
Specificity	The antibody detects endogenous levels of total ITGB3 protein.
Immunogen Type	Recombinant Protein
Immunogen Description	Fusion protein corresponding to a region derived from internal residues of human integrin, beta 3 (platelet glycoprotein IIIa, antigen CD61)
Target Name	ITGB3
Other Names	GT; CD61; GP3A; BDPLT2; GPIIIa; BDPLT16
Accession No.	Swiss-Prot#: P05106NCBI Gene ID: 3690Gene Accssion: BC127666
Uniprot	P05106
GeneID	3690;
SDS-PAGE MW	87kd
Concentration	0.9mg/ml
Formulation	Rabbit IgG in pH7.4 PBS, 0.05% NaN <sub>3</sub> , 40% Glycerol.
Storage	Store at -20°C

## Application Details

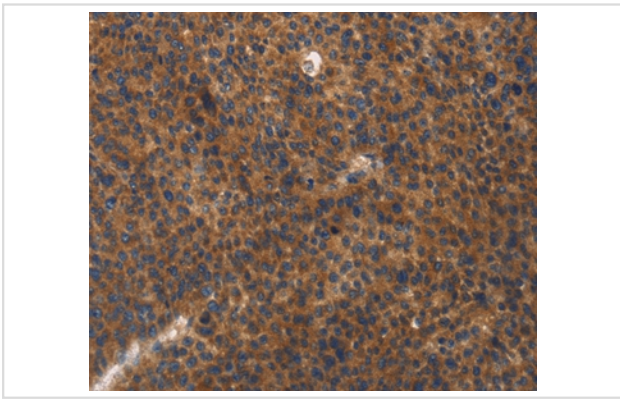
Western blotting: 1:500-1:2000

Immunohistochemistry: 1:25-1:100

## Images



Gel: 8%SDS-PAGE  
 Lysate: 40ug Jurkat cell  
 Primary antibody: 1/450 dilution  
 Secondary antibody dilution: 1/8000  
 Exposure time: 10 seconds



Immunohistochemical analysis of paraffin-embedded Human liver cancer tissue using #35782 at dilution 1/20.

## Background

The ITGB3 protein product is the integrin beta chain beta 3. Integrins are integral cell-surface proteins composed of an alpha chain and a beta chain. A given chain may combine with multiple partners resulting in different integrins. Integrin beta 3 is found along with the alpha IIb chain in platelets. Integrins are known to participate in cell adhesion as well as cell-surface mediated signalling.?

Note: This product is for in vitro research use only