

KLF7 Antibody

Catalog No: #35793

Orders: order@signalwayantibody.comSupport: tech@signalwayantibody.com

Description

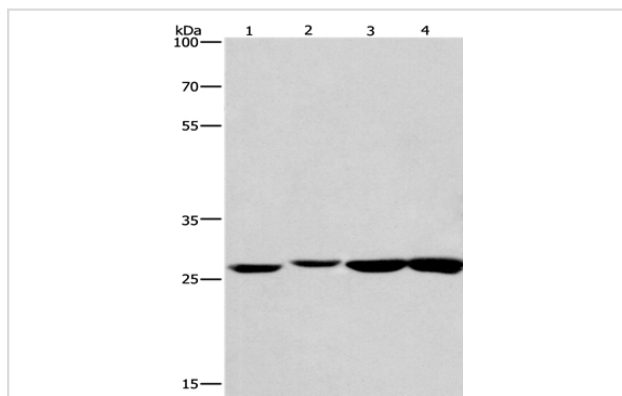
Product Name	KLF7 Antibody
Host Species	Rabbit
Clonality	Polyclonal
Purification	Antigen affinity purification.
Applications	WB,ELISA
Species Reactivity	Hu Ms
Specificity	The antibody detects endogenous levels of total KLF7 protein.
Immunogen Type	Recombinant Protein
Immunogen Description	Full length fusion protein
Target Name	KLF7
Other Names	UKLF
Accession No.	Swiss-Prot#: O75840NCBI Gene ID: 8609Gene Accssion: BC012919
Uniprot	O75840
GeneID	8609;
SDS-PAGE MW	33kd
Concentration	2.9mg/ml
Formulation	Rabbit IgG in pH7.4 PBS, 0.05% NaN ₃ , 40% Glycerol.
Storage	Store at -20°C

Application Details

Western blotting: 1:500-1:2000

Immunohistochemistry: 1:50-1:200

Images



Gel: 8%SDS-PAGE

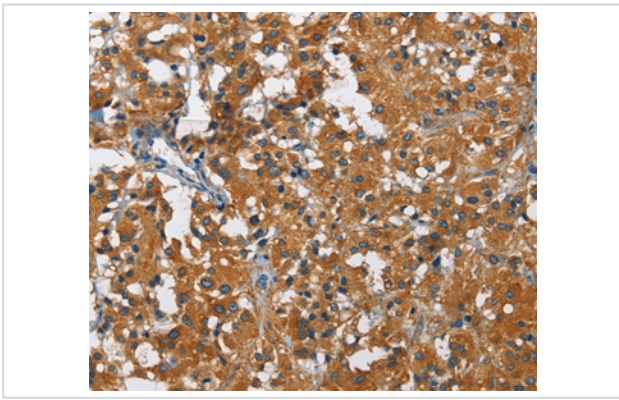
Lysates (from left to right): Humna colon cancer and mouse kidney tissue, mouse testis and human fetal brain tissue

Amount of lysate: 40ug per lane

Primary antibody: 1/483.3 dilution

Secondary antibody dilution: 1/8000

Exposure time: 20 seconds



Immunohistochemical analysis of paraffin-embedded Human thyroid cancer tissue using #35793 at dilution 1/60.

Background

The protein encoded by this gene is a member of the Kruppel-like transcriptional regulator family. Members in this family regulate cell proliferation, differentiation and survival and contain three C2H2 zinc fingers at the C-terminus that mediate binding to GC-rich sites. This protein may contribute to the progression of type 2 diabetes by inhibiting insulin expression and secretion in pancreatic beta-cells and by deregulating adipocytokine secretion in adipocytes. A pseudogene of this gene is located on the long arm of chromosome 3. Alternative splicing results in multiple transcript variants.

Note: This product is for in vitro research use only