

## KLF15 Antibody

Catalog No: #35794

Orders: [order@signalwayantibody.com](mailto:order@signalwayantibody.com)Support: [tech@signalwayantibody.com](mailto:tech@signalwayantibody.com)

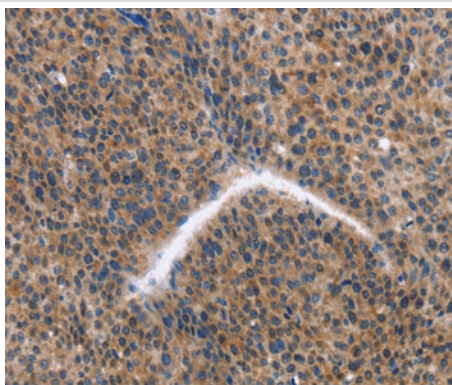
## Description

Product Name	KLF15 Antibody
Host Species	Rabbit
Clonality	Polyclonal
Purification	Antigen affinity purification.
Applications	IHC
Species Reactivity	Hu
Specificity	The antibody detects endogenous levels of total KLF15 protein.
Immunogen Type	Recombinant Protein
Immunogen Description	Fusion protein corresponding to residues near the N terminal of human Kruppel-like factor 15
Target Name	KLF15
Other Names	KKLF
Accession No.	Swiss-Prot#: Q9UIH9NCBI Gene ID: 28999Gene Accssion: BC036733
Uniprot	Q9UIH9
GeneID	28999;
Concentration	1.3mg/ml
Formulation	Rabbit IgG in pH7.4 PBS, 0.05% NaN <sub>3</sub> , 40% Glycerol.
Storage	Store at -20°C

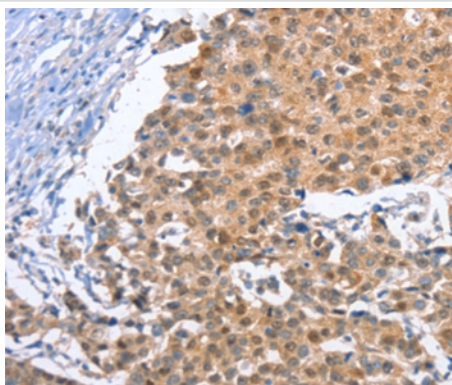
## Application Details

Immunohistochemistry: 1:25-1:100

## Images



Immunohistochemical analysis of paraffin-embedded Human liver cancer tissue using #35794 at dilution 1/30.



Immunohistochemical analysis of paraffin-embedded Human breast cancer tissue using #35794 at dilution 1/30.

## Background

Krüppel-like factor 15 is a protein that in humans is encoded by the *KLF15* gene in the Krüppel-like factor family. KLF15, a kidney-enriched Krüppel-like factor, is a transcriptional activator that binds the CLCNKA promoter. KLF15, which is a nuclear protein, is expressed primarily in liver, heart, skeletal muscle and kidney tissues but is not detected in lymphoid tissues or bone marrow. It is an important regulator of GLUT4 in both adipose and muscle tissues.

Note: This product is for in vitro research use only