

## LAT2 Antibody

Catalog No: #35799

Orders: [order@signalwayantibody.com](mailto:order@signalwayantibody.com)Support: [tech@signalwayantibody.com](mailto:tech@signalwayantibody.com)

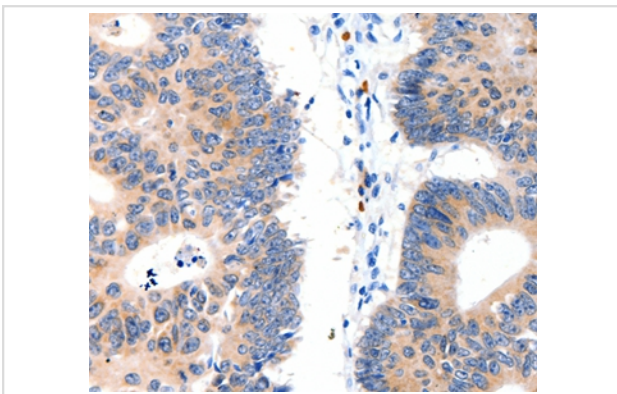
## Description

Product Name	LAT2 Antibody
Host Species	Rabbit
Clonality	Polyclonal
Purification	Antigen affinity purification.
Applications	IHC
Species Reactivity	Hu
Specificity	The antibody detects endogenous levels of total LAT2 protein.
Immunogen Type	Recombinant Protein
Immunogen Description	Fusion protein corresponding to a region derived from internal residues of human linker for activation of T cells family, member 2
Target Name	LAT2
Other Names	LAB; NTAL; WSCR5; WBSCR5; HSPC046; WBSCR15
Accession No.	Swiss-Prot#: Q9GZY6NCBI Gene ID: 7462Gene Accssion: BC001609
Uniprot	Q9GZY6
GeneID	7462;
Concentration	0.5mg/ml
Formulation	Rabbit IgG in pH7.4 PBS, 0.05% NaN <sub>3</sub> , 40% Glycerol.
Storage	Store at -20°C

## Application Details

Immunohistochemistry: 1:10-1:50

## Images



Immunohistochemical analysis of paraffin-embedded Human colon cancer tissue using #35799 at dilution 1/15.

## Background

This gene is one of the contiguous genes at 7q11.23 commonly deleted in Williams syndrome, a multisystem developmental disorder. This gene consists of at least 14 exons, and its alternative splicing generates 3 transcript variants, all encoding the same protein. Involved in FCER1 (high affinity

immunoglobulin epsilon receptor)-mediated signaling in mast cells. May also be involved in BCR (B-cell antigen receptor)-mediated signaling in B-cells and FCGR1 (high affinity immunoglobulin gamma Fc receptor I)-mediated signaling in myeloid cells. Couples activation of these receptors and their associated kinases with distal intracellular events through the recruitment of GRB2.

---

Note: This product is for in vitro research use only