

LRRK2 Antibody

Catalog No: #35803

Orders: order@signalwayantibody.comSupport: tech@signalwayantibody.com

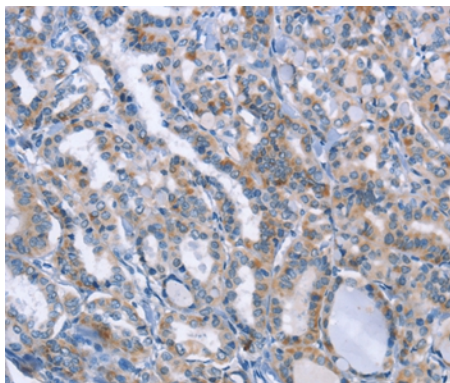
Description

Product Name	LRRK2 Antibody
Host Species	Rabbit
Clonality	Polyclonal
Purification	Antigen affinity purification.
Applications	IHC
Species Reactivity	Hu
Specificity	The antibody detects endogenous levels of total LRRK2 protein.
Immunogen Type	Recombinant Protein
Immunogen Description	Fusion protein corresponding to a region derived from internal residues of human leucine-rich repeat kinase 2
Target Name	LRRK2
Other Names	PARK8; RIPK7; ROCO2; AURA17; DARDARIN
Accession No.	Swiss-Prot#: Q5S007NCBI Gene ID: 120892Gene Accssion: BC117180
Uniprot	Q5S007
GeneID	120892;
Concentration	0.8mg/ml
Formulation	Rabbit IgG in pH7.4 PBS, 0.05% NaN ₃ , 40% Glycerol.
Storage	Store at -20°C

Application Details

Immunohistochemistry: 1:25-1:100

Images



Immunohistochemical analysis of paraffin-embedded Human thyroid cancer tissue using #35803 at dilution 1/20.

Background

This gene is a member of the leucine-rich repeat kinase family and encodes a protein with an ankyrin repeat region, a leucine-rich repeat (LRR) domain, a kinase domain, a DFG-like motif, a RAS domain, a GTPase domain, a MLK-like domain, and a WD40 domain. The protein is present largely in the cytoplasm but also associates with the mitochondrial outer membrane. Mutations in this gene have been associated with Parkinson disease-8.

Note: This product is for in vitro research use only