

LYVE1 Antibody

Catalog No: #35806

Orders: order@signalwayantibody.com

Support: tech@signalwayantibody.com

Description

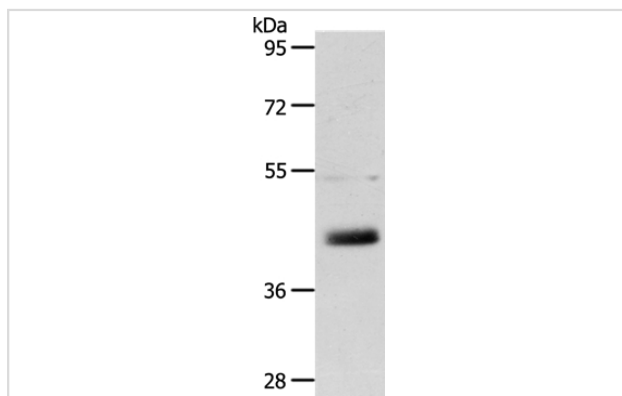
Product Name	LYVE1 Antibody
Host Species	Rabbit
Clonality	Polyclonal
Purification	Antigen affinity purification.
Applications	WB IHC
Species Reactivity	Hu
Specificity	The antibody detects endogenous levels of total LYVE1 protein.
Immunogen Type	Recombinant Protein
Immunogen Description	Fusion protein corresponding to a region derived from internal residues of human lymphatic vessel endothelial hyaluronan receptor 1
Target Name	LYVE1
Other Names	HAR; XLKD1; LYVE-1; CRSBP-1
Accession No.	Swiss-Prot#: Q9Y5Y7NCBI Gene ID: 10894Gene Accsson: BC026231
Uniprot	Q9Y5Y7
GeneID	10894;
SDS-PAGE MW	35kd
Concentration	0.6mg/ml
Formulation	Rabbit IgG in pH7.4 PBS, 0.05% NaN ₃ , 40% Glycerol.
Storage	Store at -20°C

Application Details

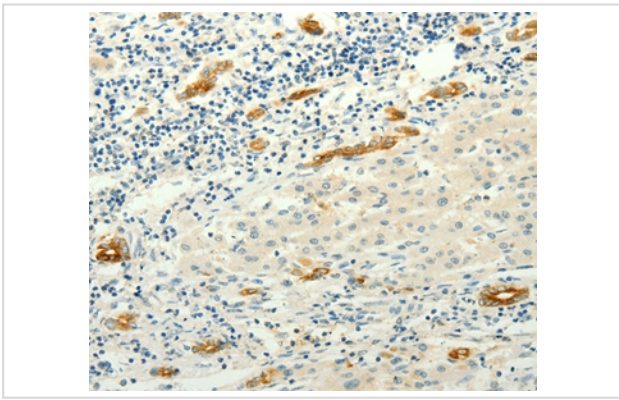
Western blotting: 1:200-1:1000

Immunohistochemistry: 1:25-1:100

Images



Gel: 10%SDS-PAGE
 Lysate: 40ug A549 cell
 Primary antibody: 1/150 dilution
 Secondary antibody dilution: 1/8000
 Exposure time: 10 minutes



Immunohistochemical analysis of paraffin-embedded Human ovarian cancer tissue using #35806 at dilution 1/20.

Background

This gene encodes a type I integral membrane glycoprotein. The encoded protein acts as a receptor and binds to both soluble and immobilized hyaluronan. This protein may function in lymphatic hyaluronan transport and have a role in tumor metastasis.

Note: This product is for in vitro research use only