

NFE2L1 Antibody

Catalog No: #35844

Orders: order@signalwayantibody.com

Support: tech@signalwayantibody.com

Description

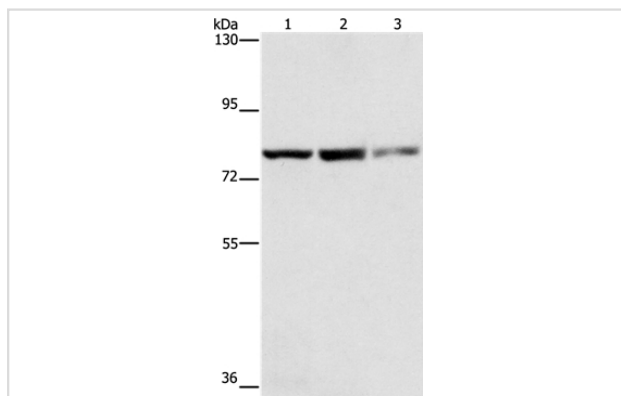
Product Name	NFE2L1 Antibody
Host Species	Rabbit
Clonality	Polyclonal
Purification	Antigen affinity purification.
Applications	WB IHC
Species Reactivity	Hu
Specificity	The antibody detects endogenous levels of total NFE2L1 protein.
Immunogen Type	Recombinant Protein
Immunogen Description	Fusion protein corresponding to residues near the C terminal of human nuclear factor, erythroid 2-like 1
Target Name	NFE2L1
Other Names	NRF1; TCF11; LCR-F1
Accession No.	Swiss-Prot#: Q14494NCBI Gene ID: 4779Gene Accssion: BC010623
Uniprot	Q14494
GeneID	4779;
SDS-PAGE MW	85kd
Concentration	1mg/ml
Formulation	Rabbit IgG in pH7.4 PBS, 0.05% NaN ₃ , 40% Glycerol.
Storage	Store at -20°C

Application Details

Western blotting: 1:200-1:1000

Immunohistochemistry: 1:25-1:100

Images



Gel: 6%SDS-PAGE

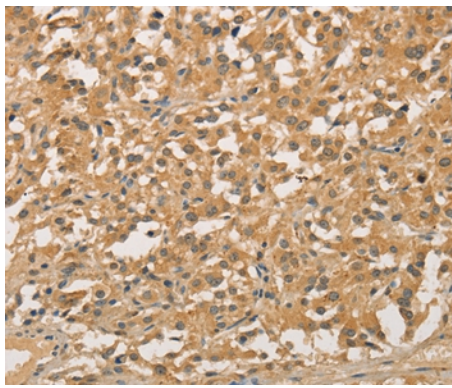
Lysates (from left to right): Raji, hepG2 and hela cell

Amount of lysate: 40ug per lane

Primary antibody: 1/250 dilution

Secondary antibody dilution: 1/8000

Exposure time: 20 seconds



Immunohistochemical analysis of paraffin-embedded Human thyroid cancer tissue using #35844 at dilution 1/20.

Background

This gene encodes a protein that is involved in globin gene expression in erythrocytes. Confusion has occurred in bibliographic databases due to the shared symbol of NRF1 for this gene, NFE2L1, and for "nuclear respiratory factor 1" which has an official symbol of NRF1.?

Note: This product is for in vitro research use only