

OCLN Antibody

Catalog No: #35850

Orders: order@signalwayantibody.comSupport: tech@signalwayantibody.com

Description

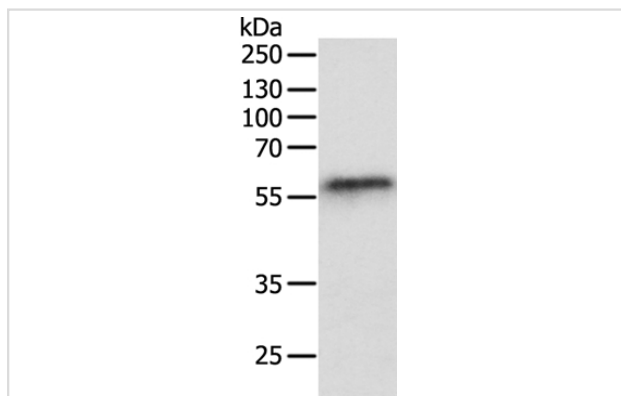
Product Name	OCLN Antibody
Host Species	Rabbit
Clonality	Polyclonal
Purification	Antigen affinity purification.
Applications	WB IHC
Species Reactivity	Human, Mouse, Rat
Specificity	The antibody detects endogenous levels of total OCLN protein.
Immunogen Type	Recombinant Protein
Immunogen Description	Fusion protein corresponding to a region derived from internal residues of human Occludin
Target Name	OCLN
Other Names	BLCPMG
Accession No.	Swiss-Prot#: Q16625NCBI Gene ID: 100506658Gene Accssion: BC029886
Uniprot	Q16625
GeneID	100506658;
SDS-PAGE MW	59kd
Concentration	0.4mg/ml
Formulation	Rabbit IgG in pH7.4 PBS, 0.05% NaN ₃ , 40% Glycerol.
Storage	Store at -20°C

Application Details

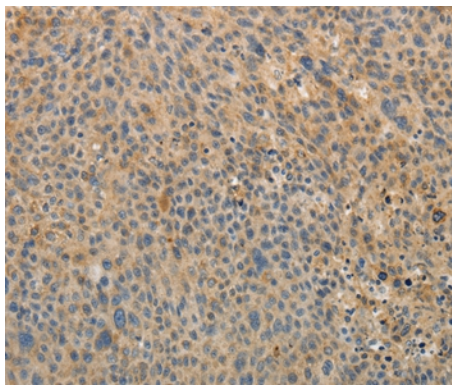
Western blotting: 1:200-1:1000

Immunohistochemistry: 1:15-1:50

Images



Gel: 10%SDS-PAGE
 Lysates (from left to right): Human liver cancer tissue
 Amount of lysate: 40ug per lane
 Primary antibody: 1/200 dilution
 Secondary antibody dilution: 1/8000
 Exposure time: 10 minutes



Immunohistochemical analysis of paraffin-embedded Human liver cancer tissue using #35850 at dilution 1/10.

Background

This gene encodes an integral membrane protein that is required for cytokine-induced regulation of the tight junction paracellular permeability barrier. Mutations in this gene are thought to be a cause of band-like calcification with simplified gyration and polymicrogyria (BLC-PMG), an autosomal recessive neurologic disorder that is also known as pseudo-TORCH syndrome. Alternative splicing results in multiple transcript variants. A related pseudogene is present 1.5 Mb downstream on the q arm of chromosome 5.

Note: This product is for in vitro research use only