

ATF4(Phospho-Ser245) Antibody

Catalog No: #11053

Package Size: #11053-1 50ul #11053-2 100ul

Orders: order@signalwayantibody.com

Support: tech@signalwayantibody.com

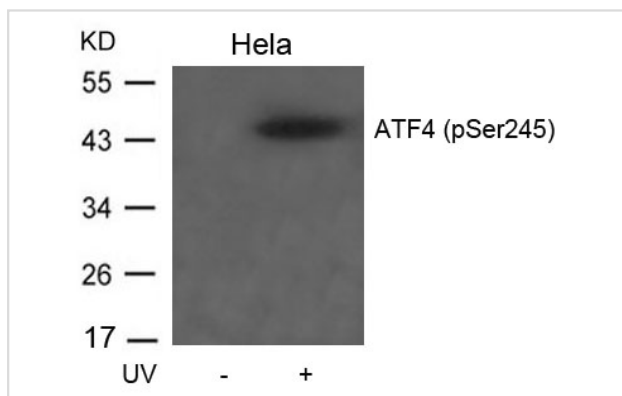
Description

Product Name	ATF4(Phospho-Ser245) Antibody
Host Species	Rabbit
Clonality	Polyclonal
Purification	The antibody was purified by immunogen affinity chromatography.
Applications	WB, IHC, IF/IC
Species Reactivity	HuO Ms,Rat
Specificity	The antibody detects endogenous level of ATF4 only when phosphorylated at serine 245.
Immunogen Type	Peptide-KLH
Immunogen Description	KLH-conjugated synthetic phosphopeptide corresponding to residues surrounding S245 of human ATF4 protein. The exact sequence is proprietary.
Target Name	ATF4
Modification	Phospho
Other Names	C/ATF; C/EBP-related ATF; CREB2
Accession No.	Swiss-Prot: P18848NCBI Protein: NP_001666.2
Uniprot	P18848
GeneID	468;
Concentration	1.0mg/ml
Formulation	Liquid in 0.42% Potassium phosphate, 0.87% Sodium chloride, pH 7.3, 30% glycerol, and 0.01% sodium azide.
Storage	Store at -20°C for long term preservation (recommended). Store at 4°C for short term use.

Application Details

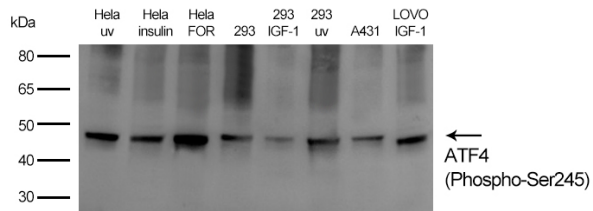
WB 1:500 - 1:1000, IH 1:50 - 1:100, IF/IC 1:50 - 1:200

Images

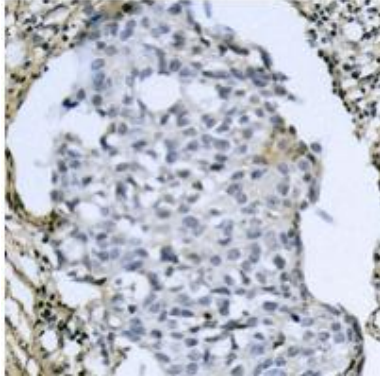


Western blot analysis of extracts from HeLa cells untreated or treated with UV using ATF4(Phospho-Ser245) Antibody #11053.

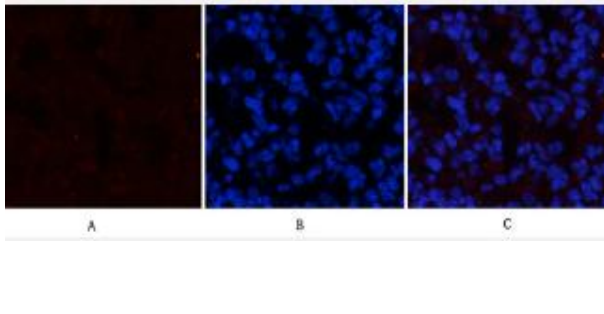
Western Blot analysis of various cell lysis using Antibody diluted at 1:500.



Immunohistochemical analysis of ATF4 (Phospho-S245) staining in human breast cancer formalin fixed paraffin embedded tissue section.



Immunofluorescent analysis of ATF4 (Phospho-S245) staining in A549 cells.



Note: This product is for in vitro research use only