

SERPINE1 Antibody

Catalog No: #35861

Orders: order@signalwayantibody.comSupport: tech@signalwayantibody.com

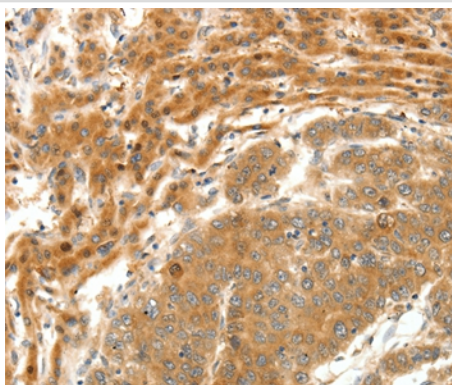
Description

Product Name	SERPINE1 Antibody
Host Species	Rabbit
Clonality	Polyclonal
Purification	Antigen affinity purification.
Applications	IHC
Species Reactivity	Hu
Specificity	The antibody detects endogenous levels of total SERPINE1 protein.
Immunogen Type	Recombinant Protein
Immunogen Description	Fusion protein corresponding to a region derived from internal residues of human serpin peptidase inhibitor, clade E (nexin, plasminogen activator inhibitor type 1), member 1
Target Name	SERPINE1
Other Names	PAI; PAI1; PAI-1; PLANH1
Accession No.	Swiss-Prot#: P05121NCBI Gene ID: 5054Gene Accssion: BC010860
Uniprot	P05121
GeneID	5054;
Concentration	0.6mg/ml
Formulation	Rabbit IgG in pH7.4 PBS, 0.05% NaN3, 40% Glycerol.
Storage	Store at -20°C

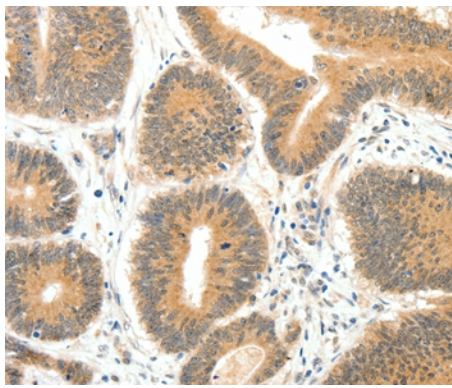
Application Details

Immunohistochemistry: 1:25-1:100

Images



Immunohistochemical analysis of paraffin-embedded Human breast cancer tissue using #35861 at dilution 1/20.



Immunohistochemical analysis of paraffin-embedded Human colon cancer tissue using #35861 at dilution 1/20.

Background

This gene encodes a member of the serine proteinase inhibitor (serpin) superfamily. This member is the principal inhibitor of tissue plasminogen activator (tPA) and urokinase (uPA), and hence is an inhibitor of fibrinolysis. Defects in this gene are the cause of plasminogen activator inhibitor-1 deficiency (PAI-1 deficiency), and high concentrations of the gene product are associated with thrombophilia. Alternatively spliced transcript variants encoding different isoforms have been found for this gene.

Note: This product is for in vitro research use only