

## SART1 antibody

Catalog No: #22063

Orders: order@signalwayantibody.com

Support: tech@signalwayantibody.com

## Description

Product Name	SART1 antibody
Host Species	Rabbit
Clonality	Polyclonal
Purification	Purified by antigen-affinity chromatography.
Applications	WB IHC IF
Species Reactivity	Hu
Immunogen Type	Recombinant protein
Immunogen Description	Recombinant protein fragment contain a sequence corresponding to a region within amino acids 137 and 417 of SART1
Target Name	SART1
Accession No.	Swiss-Prot:O43290Gene ID:9092
Uniprot	O43290
GeneID	9092;
Concentration	0.8mg/ml
Formulation	Supplied in 0.1M Tris-buffered saline with 10% Glycerol (pH7.0). 0.01% Thimerosal was added as a preservative.
Storage	Store at -20°C for long term preservation (recommended). Store at 4°C for short term use.

## Application Details

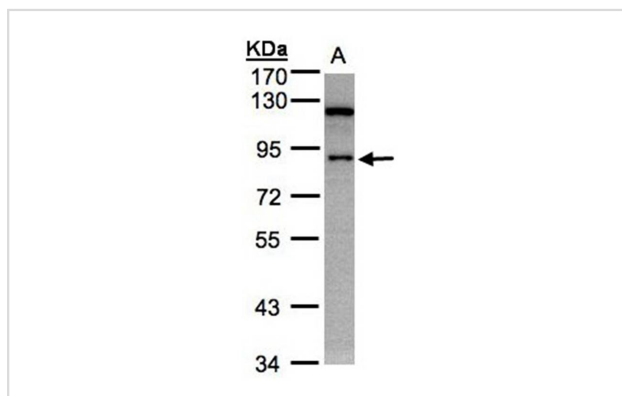
Predicted MW: 90kd

Western blotting: 1:500-1:3000

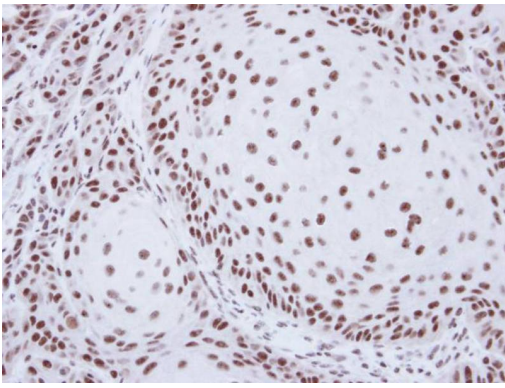
Immunohistochemistry: 1:100-1:500

Immunofluorescence: 1:100-1:200

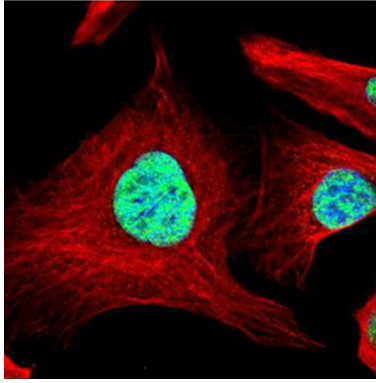
## Images



Sample(30 ug whole cell lysate)  
A: A431  
7.5% SDS PAGE  
Primary antibody diluted at 1: 5000



Immunohistochemical analysis of paraffin-embedded Cal27 xenograft, using SART1 antibody at 1: 500 dilution.



Confocal immunofluorescence analysis (Olympus FV10i) of paraformaldehyde-fixed U2OS, using SART1 antibody (Green) at 1: 500 dilution and alpha-tubulin antibody (Red) at 1: 2000.

## Background

This gene encodes two proteins, the SART1(800) protein expressed in the nucleus of the majority of proliferating cells, and the SART1(259) protein expressed in the cytosol of epithelial cancers. The SART1(259) protein is translated by the mechanism of -1 frameshifting during posttranscriptional regulation; its full-length sequence is not published yet. The two encoded proteins are thought to be involved in the regulation of proliferation. Both proteins have tumor-rejection antigens. The SART1(259) protein possesses tumor epitopes capable of inducing HLA-A2402-restricted cytotoxic T lymphocytes in cancer patients. This SART1(259) antigen may be useful in specific immunotherapy for cancer patients and may serve as a paradigmatic tool for the diagnosis and treatment of patients with atopy. The SART1(259) protein is found to be essential for the recruitment of the tri-snRNP to the pre-spliceosome in the spliceosome assembly pathway. [provided by RefSeq]

Note: This product is for in vitro research use only