

PTCH1 Antibody

Catalog No: #35897

Orders: order@signalwayantibody.comSupport: tech@signalwayantibody.com

Description

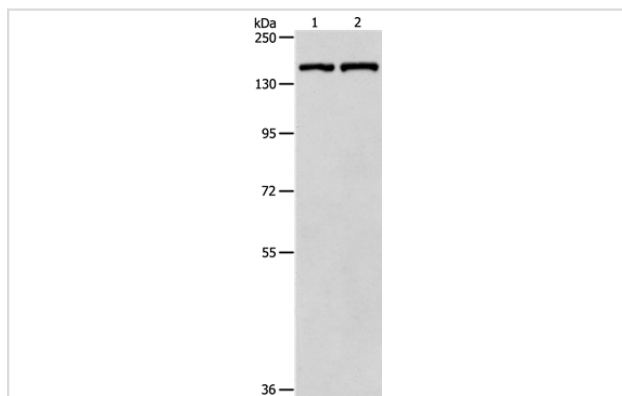
Product Name	PTCH1 Antibody
Host Species	Rabbit
Clonality	Polyclonal
Purification	Antigen affinity purification.
Applications	WB IHC
Species Reactivity	Hu Ms
Specificity	The antibody detects endogenous levels of total PTCH1 protein.
Immunogen Type	Recombinant Protein
Immunogen Description	Full length fusion protein
Target Name	PTCH1
Other Names	PTC; BCNS; HPE7; PTC1; PTCH; NBCCS; PTCH11
Accession No.	Swiss-Prot#: Q13635NCBI Gene ID: 5727Gene Accssion: BC043542
Uniprot	Q13635
GeneID	5727;
SDS-PAGE MW	161kd
Concentration	1.8mg/ml
Formulation	Rabbit IgG in pH7.4 PBS, 0.05% NaN ₃ , 40% Glycerol.
Storage	Store at -20°C

Application Details

Western blotting: 1:500-1:2000

Immunohistochemistry: 1:50-1:200

Images



Gel: 8%SDS-PAGE

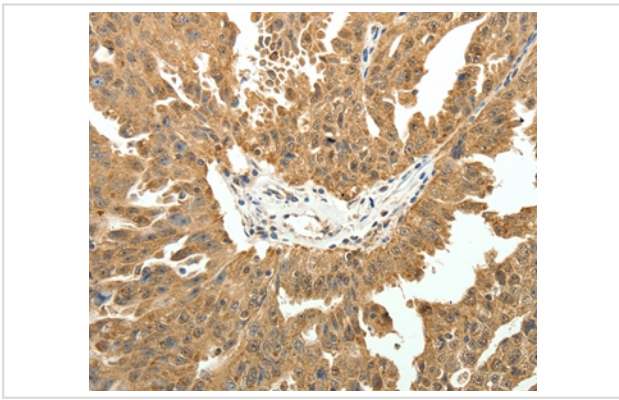
Lysates (from left to right): HeLa cell and mouse lung tissue

Amount of lysate: 40ug per lane

Primary antibody: 1/900 dilution

Secondary antibody dilution: 1/8000

Exposure time: 1 minute



Immunohistochemical analysis of paraffin-embedded Human thyroid cancer tissue using #35897 at dilution 1/50.

Background

This gene encodes a member of the patched gene family. The encoded protein is the receptor for sonic hedgehog, a secreted molecule implicated in the formation of embryonic structures and in tumorigenesis, as well as the desert hedgehog and indian hedgehog proteins. This gene functions as a tumor suppressor. Mutations of this gene have been associated with basal cell nevus syndrome, esophageal squamous cell carcinoma, trichoepitheliomas, transitional cell carcinomas of the bladder, as well as holoprosencephaly. Alternative splicing results in multiple transcript variants encoding different isoforms. Additional splice variants have been described, but their full length sequences and biological validity cannot be determined currently.

Note: This product is for in vitro research use only