

## RGS2 Antibody

Catalog No: #35906

Orders: [order@signalwayantibody.com](mailto:order@signalwayantibody.com)Support: [tech@signalwayantibody.com](mailto:tech@signalwayantibody.com)

## Description

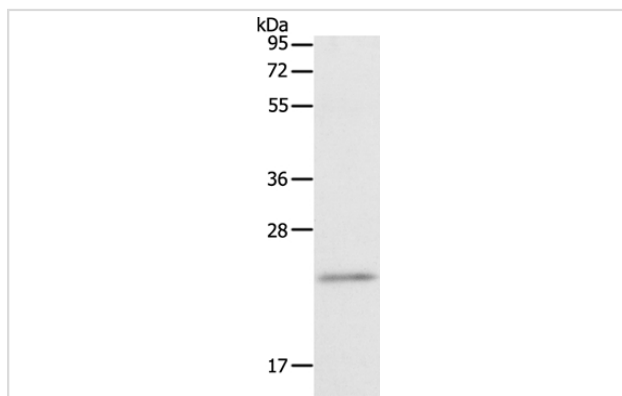
Product Name	RGS2 Antibody
Host Species	Rabbit
Clonality	Polyclonal
Purification	Antigen affinity purification.
Applications	WB,ELISA, IHC
Species Reactivity	Hu Rt Ms
Specificity	The antibody detects endogenous levels of total RGS2 protein.
Immunogen Type	Recombinant Protein
Immunogen Description	Fusion protein corresponding to a region derived from internal residues of human Egulator of G-protein signaling 2, 24kDa
Target Name	RGS2
Other Names	G0S8
Accession No.	Swiss-Prot#: P41220NCBI Gene ID: 5997Gene Accssion: BC007049
Uniprot	P41220
GeneID	5997;
SDS-PAGE MW	24kd
Concentration	1.4mg/ml
Formulation	Rabbit IgG in pH7.4 PBS, 0.05% NaN <sub>3</sub> , 40% Glycerol.
Storage	Store at -20°C

## Application Details

Western blotting: 1:500-1:2000

Immunohistochemistry: 1:25-1:100

## Images



Gel: 12%SDS-PAGE

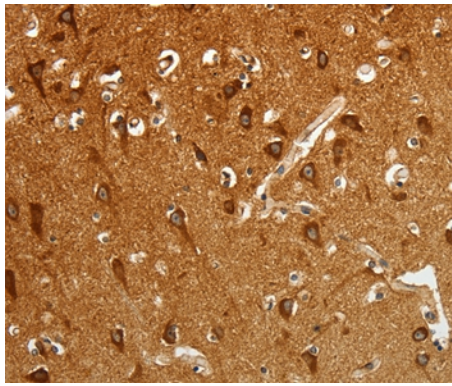
Lysates (from left to right): Human fetal lung tissue

Amount of lysate: 40ug per lane

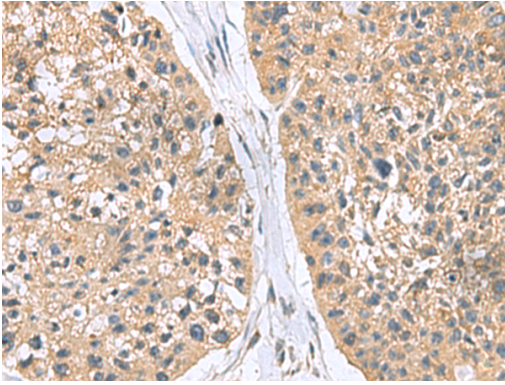
Primary antibody: 1/800 dilution

Secondary antibody dilution: 1/8000

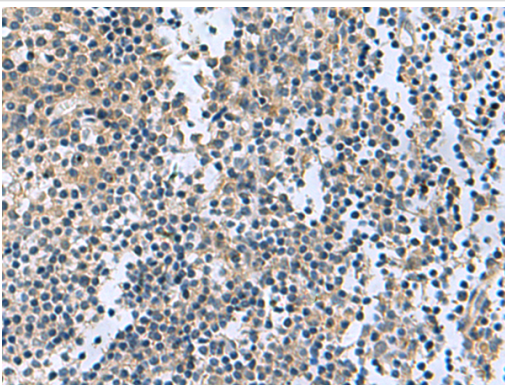
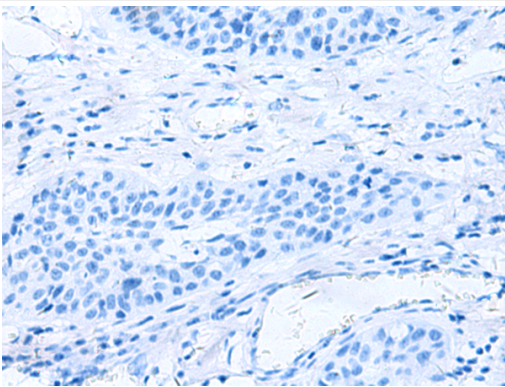
Exposure time: 40 seconds



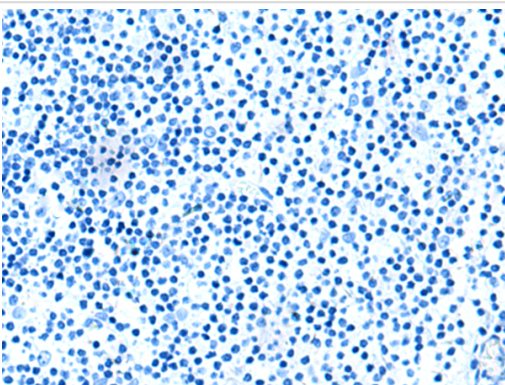
Immunohistochemical analysis of paraffin-embedded Human brain tissue using #35906 at dilution 1/20.



The image on the left is immunohistochemistry of paraffin-embedded Human esophagus cancer tissue using (RGS2 Antibody) at dilution 1/95, on the right is treated with fusion protein. (Original magnification:  $\times 200$ )



The image on the left is immunohistochemistry of paraffin-embedded Human tonsil tissue using (RGS2 Antibody) at dilution 1/95, on the right is treated with fusion protein. (Original magnification:  $\times 200$ )



## Background

---

Regulator of G protein signaling (RGS) family members are regulatory molecules that act as GTPase activating proteins (GAPs) for G alpha subunits of heterotrimeric G proteins. RGS proteins are able to deactivate G protein subunits of the Gi alpha, Go alpha and Gq alpha subtypes. They drive G proteins into their inactive GDP-bound forms. Regulator of G protein signaling 2 belongs to this family. The protein acts as a mediator of myeloid differentiation and may play a role in leukemogenesis.

---

Note: This product is for in vitro research use only