

SEMA3G Antibody

Catalog No: #35912

Orders: order@signalwayantibody.com

Support: tech@signalwayantibody.com

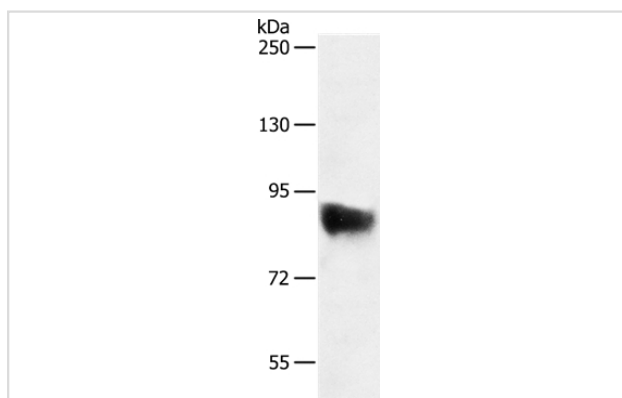
Description

Product Name	SEMA3G Antibody
Host Species	Rabbit
Clonality	Polyclonal
Purification	Antigen affinity purification.
Applications	WB
Species Reactivity	Hu
Specificity	The antibody detects endogenous levels of total SEMA3G protein.
Immunogen Type	Recombinant Protein
Immunogen Description	Fusion protein corresponding to residues near the C terminal of human sema domain, immunoglobulin domain (Ig), short basic domain, secreted, (semaphorin) 3G
Target Name	SEMA3G
Other Names	sem2
Accession No.	Swiss-Prot#: Q9NS98NCBI Gene ID: 56920Gene Accssion: BC098137
Uniprot	Q9NS98
GeneID	56920;
SDS-PAGE MW	87kd
Concentration	0.9mg/ml
Formulation	Rabbit IgG in pH7.4 PBS, 0.05% NaN ₃ , 40% Glycerol.
Storage	Store at -20°C

Application Details

Western blotting: 1:200-1:1000

Images



Gel: 8%SDS-PAGE
 Lysate: 50ug Jurkat cell
 Primary antibody: 1/400 dilution
 Secondary antibody dilution: 1/8000
 Exposure time: 30 minutes

Background

Semaphorins are a class of secreted and membrane proteins that act as axonal growth cone guidance molecules. They primarily act as

short-range inhibitory signals and signal through multimeric receptor complexes. They are usually cues to deflect axons from inappropriate regions, especially important in neural system development. The major class of proteins that act as their receptors are called plexins. SEMA3G possesses anti-migration and anti-invasion ability. SEMA3G inhibited tumor cell migration and invasion, which may be obtained through cell autonomous or paracrine mechanisms, and SEMA3G is a potential target for antitumor migration and invasion.

Note: This product is for in vitro research use only