

## SLC19A2 Antibody

Catalog No: #35917

Orders: [order@signalwayantibody.com](mailto:order@signalwayantibody.com)Support: [tech@signalwayantibody.com](mailto:tech@signalwayantibody.com)

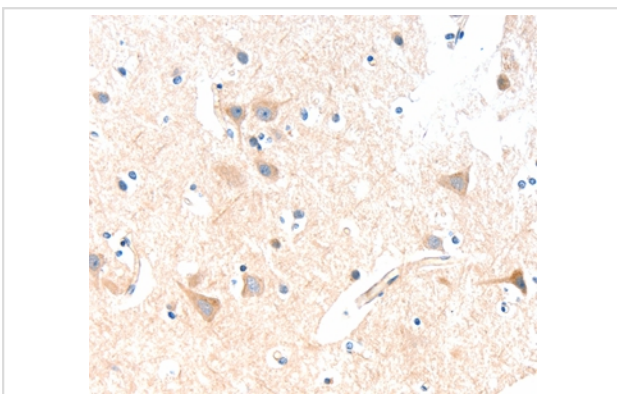
## Description

Product Name	SLC19A2 Antibody
Host Species	Rabbit
Clonality	Polyclonal
Purification	Antigen affinity purification.
Applications	IHC
Species Reactivity	Hu
Specificity	The antibody detects endogenous levels of total SLC19A2 protein.
Immunogen Type	Recombinant Protein
Immunogen Description	Fusion protein corresponding to a region derived from internal residues of human solute carrier family 19 (thiamine transporter), member 2
Target Name	SLC19A2
Other Names	TC1; THT1; TRMA; THMD1; THTR1
Accession No.	Swiss-Prot#: O60779NCBI Gene ID: 10560Gene Accssion: BC018514
Uniprot	O60779
GeneID	10560;
Concentration	0.8mg/ml
Formulation	Rabbit IgG in pH7.4 PBS, 0.05% NaN <sub>3</sub> , 40% Glycerol.
Storage	Store at -20°C

## Application Details

Immunohistochemistry: 1:15-1:50

## Images



Immunohistochemical analysis of paraffin-embedded Human brain tissue using #35917 at dilution 1/15.

## Background

This gene encodes the thiamin transporter protein. Mutations in this gene cause thiamin-responsive megaloblastic anemia syndrome (TRMA), which is an autosomal recessive disorder characterized by diabetes mellitus, megaloblastic anemia and sensorineural deafness.

---

Note: This product is for in vitro research use only