

SLC25A11 Antibody

Catalog No: #35918

Orders: order@signalwayantibody.com

Support: tech@signalwayantibody.com

Description

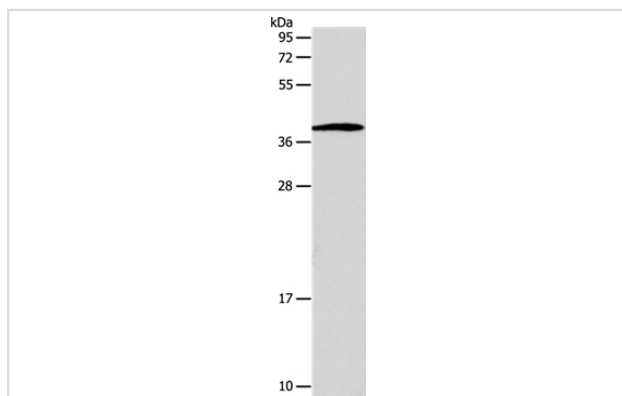
Product Name	SLC25A11 Antibody
Host Species	Rabbit
Clonality	Polyclonal
Purification	Antigen affinity purification.
Applications	WB IHC
Species Reactivity	Hu
Specificity	The antibody detects endogenous levels of total SLC25A11 protein.
Immunogen Type	Recombinant Protein
Immunogen Description	Fusion protein corresponding to a region derived from internal residues of human solute carrier family 25 (mitochondrial carrier; oxoglutarate carrier), member 11
Target Name	SLC25A11
Other Names	OGC; SLC20A4
Accession No.	Swiss-Prot#: Q02978NCBI Gene ID: 8402Gene Accssion: BC006508
Uniprot	Q02978
GeneID	8402;
SDS-PAGE MW	34kd
Concentration	1.2mg/ml
Formulation	Rabbit IgG in pH7.4 PBS, 0.05% NaN ₃ , 40% Glycerol.
Storage	Store at -20°C

Application Details

Western blotting: 1:500-1:2000

Immunohistochemistry: 1:25-1:100

Images



Gel: 12%SDS-PAGE

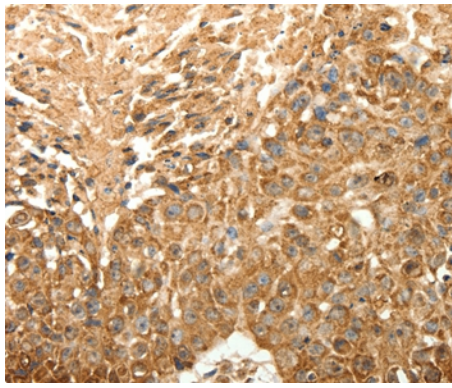
Lysates (from left to right): Human lymphoma tissue

Amount of lysate: 40ug per lane

Primary antibody: 1/600 dilution

Secondary antibody dilution: 1/8000

Exposure time: 20 seconds



Immunohistochemical analysis of paraffin-embedded Human esophagus cancer tissue using #35918 at dilution 1/30.

Background

The oxoglutarate/malate carrier transports 2-oxoglutarate across the inner membranes of mitochondria in an electroneutral exchange for malate or other dicarboxylic acids, and plays an important role in several metabolic processes, contains the malate-aspartate shuttle, the oxoglutarate/isocitrate shuttle, in gluconeogenesis from lactate, and in nitrogen metabolism.

Note: This product is for in vitro research use only