

## SOCS3 Antibody

Catalog No: #35924

Orders: order@signalwayantibody.com

Support: tech@signalwayantibody.com

## Description

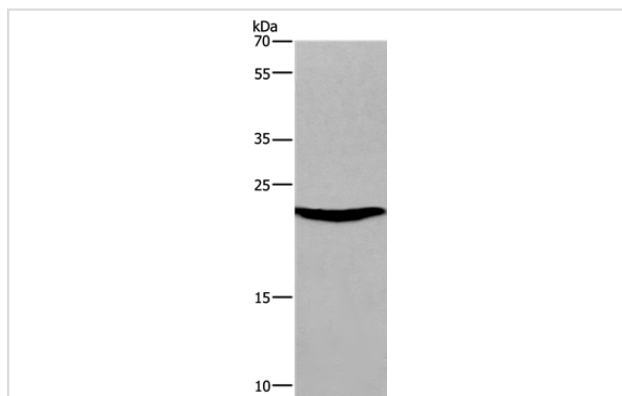
Product Name	SOCS3 Antibody
Host Species	Rabbit
Clonality	Polyclonal
Purification	Antigen affinity purification.
Applications	WB IHC
Species Reactivity	Hu Ms
Specificity	The antibody detects endogenous levels of total SOCS3 protein.
Immunogen Type	Recombinant Protein
Immunogen Description	Full length fusion protein
Target Name	SOCS3
Other Names	CIS3; SSI3; ATOD4; Cish3; SSI-3; SOCS-3
Accession No.	Swiss-Prot#: O14543NCBI Gene ID: 9021Gene Accssion: BC060858
Uniprot	O14543
GeneID	9021;
SDS-PAGE MW	25kd
Concentration	0.6mg/ml
Formulation	Rabbit IgG in pH7.4 PBS, 0.05% NaN <sub>3</sub> , 40% Glycerol.
Storage	Store at -20°C

## Application Details

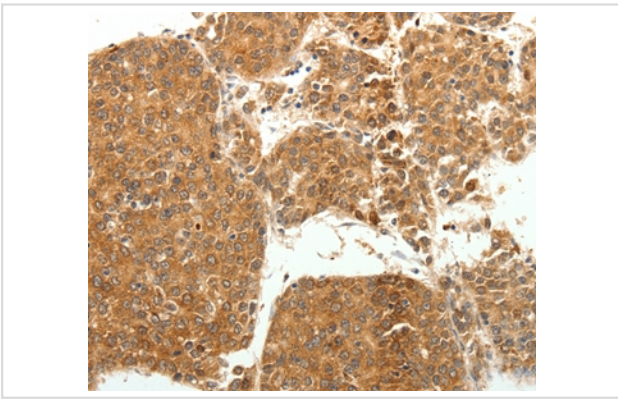
Western blotting: 1:500-1:2000

Immunohistochemistry: 1:25-1:100

## Images



Gel: 8%SDS-PAGE  
 Lysates (from left to right): Mouse heart tissue  
 Amount of lysate: 40ug per lane  
 Primary antibody: 1/300 dilution  
 Secondary antibody dilution: 1/8000  
 Exposure time: 20 seconds



Immunohistochemical analysis of paraffin-embedded Human liver cancer tissue using #35924 at dilution 1/20.

## Background

This gene encodes a member of the STAT-induced STAT inhibitor (SSI), also known as suppressor of cytokine signaling (SOCS), family. SSI family members are cytokine-inducible negative regulators of cytokine signaling. The expression of this gene is induced by various cytokines, including IL6, IL10, and interferon (IFN)-gamma. The protein encoded by this gene can bind to JAK2 kinase, and inhibit the activity of JAK2 kinase. Studies of the mouse counterpart of this gene suggested the roles of this gene in the negative regulation of fetal liver hematopoiesis, and placental development.

Note: This product is for in vitro research use only