

# IL1RL1 Antibody

Catalog No: #35992



Orders: [order@signalwayantibody.com](mailto:order@signalwayantibody.com)  
Support: [tech@signalwayantibody.com](mailto:tech@signalwayantibody.com)

## Description

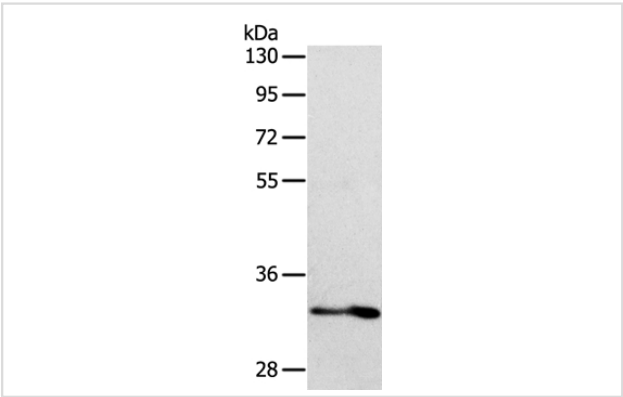
Product Name	IL1RL1 Antibody
Host Species	Rabbit
Clonality	Polyclonal
Purification	Antigen affinity purification.
Applications	WB IHC
Species Reactivity	Hu
Specificity	The antibody detects endogenous levels of total IL1RL1 protein.
Immunogen Type	Recombinant Protein
Immunogen Description	Fusion protein corresponding to residues near the C terminal of human Interleukin 1 receptor-like 1
Target Name	IL1RL1
Other Names	T1; ST2; DER4; ST2L; ST2V; FIT-1; IL33R
Accession No.	Swiss-Prot#: Q01638NCBI Gene ID: 9173Gene Accssion: BC030975
Uniprot	Q01638
GeneID	9173;
SDS-PAGE MW	37kd
Concentration	1.4mg/ml
Formulation	Rabbit IgG in pH7.4 PBS, 0.05% NaN3, 40% Glycerol.
Storage	Store at -20°C

## Application Details

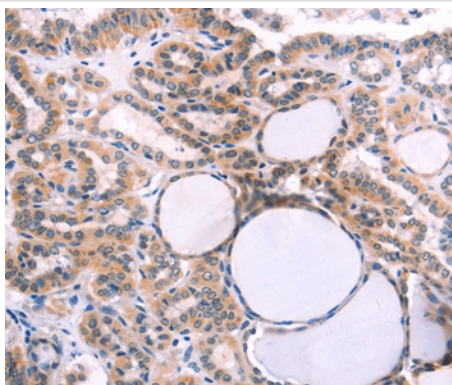
Western blotting: 1:500-1:2000

Immunohistochemistry: 1:50-1:200

## Images



Gel: 10%SDS-PAGE  
Lysate: 40ug Human fetal intestine tissue  
Primary antibody: 1/700 dilution  
Secondary antibody dilution: 1/8000  
Exposure time: 2 minutes



Immunohistochemical analysis of paraffin-embedded Human thyroid cancer tissue using #35992 at dilution 1/40.

## Background

The protein encoded by this gene is a member of the interleukin 1 receptor family. Studies of the similar gene in mouse suggested that this receptor can be induced by proinflammatory stimuli, and may be involved in the function of helper T cells. This gene, interleukin 1 receptor, type I (IL1R1), interleukin 1 receptor, type II (IL1R2) and interleukin 1 receptor-like 2 (IL1RL2) form a cytokine receptor gene cluster in a region mapped to chromosome 2q12. Alternative splicing of this gene results in multiple transcript variants.

Note: This product is for in vitro research use only