

Description

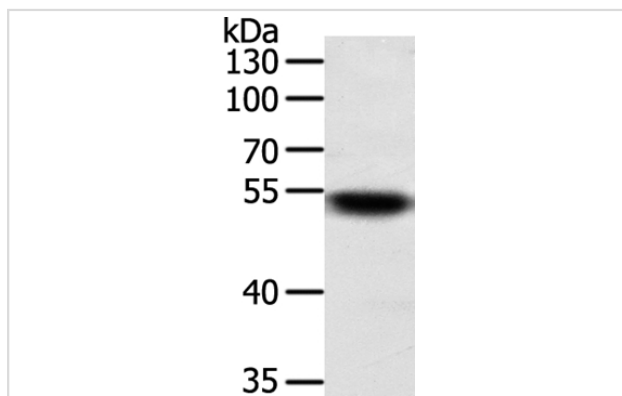
Product Name	SUFU Antibody
Host Species	Rabbit
Clonality	Polyclonal
Purification	Antigen affinity purification.
Applications	WB IHC
Species Reactivity	Hu
Specificity	The antibody detects endogenous levels of total SUFU protein.
Immunogen Type	Recombinant Protein
Immunogen Description	Fusion protein corresponding to residues near the C terminal of human Suppressor of fused homolog (Drosophila)
Target Name	SUFU
Other Names	SUFUH; SUFUXL; PRO1280
Accession No.	Swiss-Prot#: Q9UMX1NCBI Gene ID: 51684Gene Accssion: BC013291
Uniprot	Q9UMX1
GeneID	51684;
SDS-PAGE MW	54kd
Concentration	0.5mg/ml
Formulation	Rabbit IgG in pH7.4 PBS, 0.05% NaN ₃ , 40% Glycerol.
Storage	Store at -20°C

Application Details

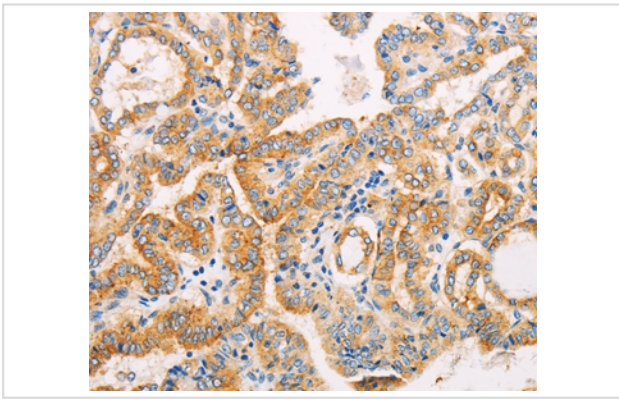
Western blotting: 1:200-1:1000

Immunohistochemistry: 1:15-1:50

Images



Gel: 10%SDS-PAGE
Lysate: 50ug Jurkat cell
Primary antibody: 1/100 dilution
Secondary antibody dilution: 1/8000
Exposure time: 10 seconds



Immunohistochemical analysis of paraffin-embedded Human thyroid cancer tissue using #35993 at dilution 1/10.

Background

The Hedgehog signaling pathway plays an important role in early human development. The pathway is a signaling cascade that plays a role in pattern formation and cellular proliferation during development. This gene encodes a negative regulator of the hedgehog signaling pathway. Defects in this gene are a cause of medulloblastoma. Alternative splicing results in multiple transcript variants.

Note: This product is for in vitro research use only