

## VANGL1 Antibody

Catalog No: #35999

Orders: [order@signalwayantibody.com](mailto:order@signalwayantibody.com)Support: [tech@signalwayantibody.com](mailto:tech@signalwayantibody.com)

## Description

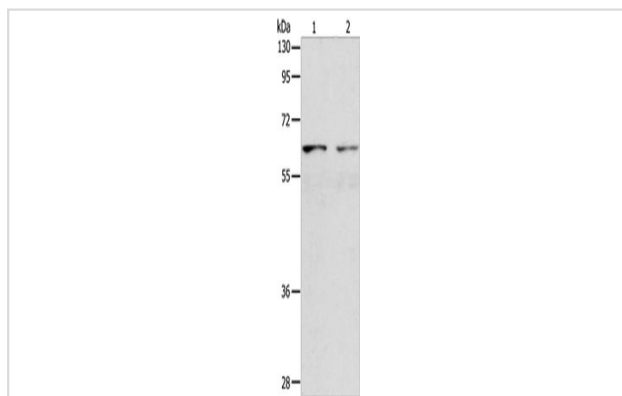
Product Name	VANGL1 Antibody
Host Species	Rabbit
Clonality	Polyclonal
Purification	Antigen affinity purification.
Applications	WB IHC
Species Reactivity	Human, Mouse
Specificity	The antibody detects endogenous levels of total VANGL1 protein.
Immunogen Type	Recombinant Protein
Immunogen Description	Fusion protein of human VANGL1
Target Name	VANGL1
Other Names	LPP2; STB2; STBM2; KITENIN
Accession No.	Swiss-Prot#: Q8TAA9NCBI Gene ID: 81839Gene Accssion: BC065272
Uniprot	Q8TAA9
GeneID	81839;
SDS-PAGE MW	60kd
Concentration	0.4 mg/ml
Formulation	Rabbit IgG in pH7.4 PBS, 0.05% NaN <sub>3</sub> , 40% Glycerol.
Storage	Store at -20°C

## Application Details

Western blotting: 1:200-1:1000

Immunohistochemistry: 1:25-1:100

## Images



Gel: 8%SDS-PAGE

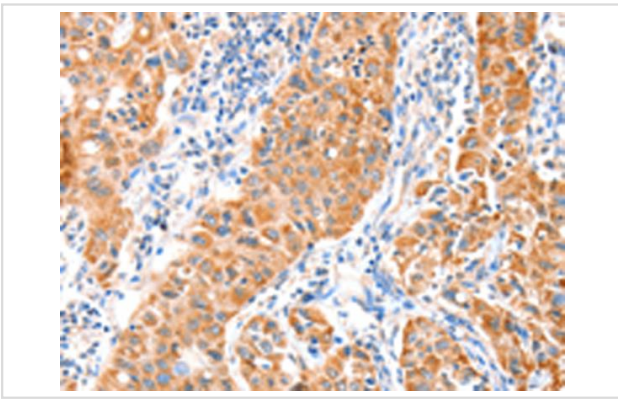
Lysate: 40 ug

Lane 1-2: Human lymphoma tissue, Human testis tissue

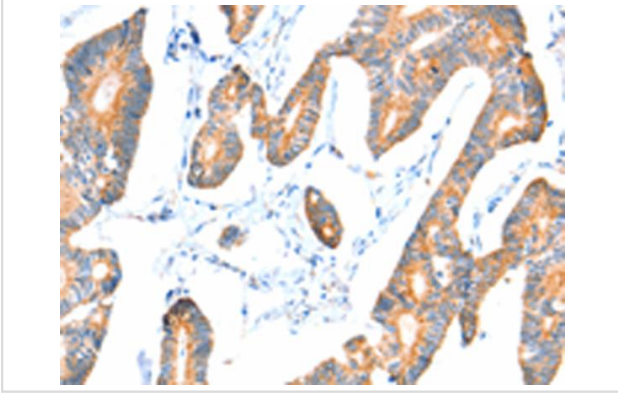
Primary antibody: (VANGL1 Antibody) at dilution 1/250

Secondary antibody: Goat anti rabbit IgG at 1/8000 dilution

Exposure time: 20 seconds



The image on the left is immunohistochemistry of paraffin-embedded Human lung cancer tissue using(VANGL1 Antibody) at dilution 1/20



The image on the left is immunohistochemistry of paraffin-embedded Human colon cancer tissue using (VANGL1 Antibody) at dilution 1/20

## Background

This gene encodes a member of the tetraspanin family. The encoded protein may be involved in mediating intestinal trefoil factor induced wound healing in the intestinal mucosa. Mutations in this gene are associated with neural tube defects. Alternate splicing results in multiple transcript variants. Interacts through its C-terminal region with the N-terminal half of DVL1, DVL2 and DVL3. The PDZ domain of DVL1, DVL2 and DVL3 is required for the interaction.

Note: This product is for in vitro research use only