

## ABLIM1 Antibody

Catalog No: #36011

Orders: order@signalwayantibody.com

Support: tech@signalwayantibody.com

## Description

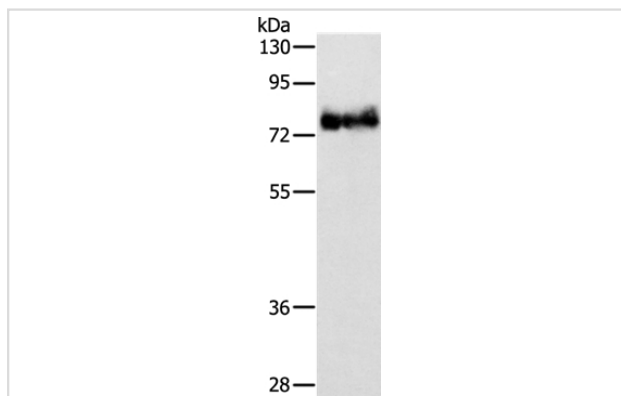
Product Name	ABLIM1 Antibody
Host Species	Rabbit
Clonality	Polyclonal
Purification	Antigen affinity purification.
Applications	WB IHC
Species Reactivity	Hu Ms
Specificity	The antibody detects endogenous levels of total ABLIM1 protein.
Immunogen Type	Recombinant Protein
Immunogen Description	Fusion protein corresponding to a region derived from internal residues of human Actin binding LIM protein 1
Target Name	ABLIM1
Other Names	ABLIM; LIMAB1; LIMATIN; abLIM-1
Accession No.	Swiss-Prot#: O14639NCBI Gene ID: 3983Gene Accssion: BC002448
Uniprot	O14639
GeneID	3983;
SDS-PAGE MW	88kd
Concentration	1.3mg/ml
Formulation	Rabbit IgG in pH7.4 PBS, 0.05% NaN <sub>3</sub> , 40% Glycerol.
Storage	Store at -20°C

## Application Details

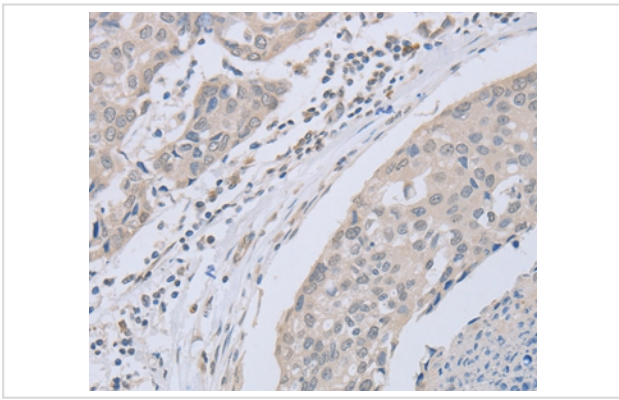
Western blotting: 1:500-1:2000

Immunohistochemistry: 1:25-1:100

## Images



Gel: 8%SDS-PAGE  
Lysates (from left to right): Mouse heart tissue  
Amount of lysate: 40ug per lane  
Primary antibody: 1/650 dilution  
Secondary antibody dilution: 1/8000  
Exposure time: 40 seconds



Immunohistochemical analysis of paraffin-embedded Human breast cancer tissue using #36011 at dilution 1/30.

## Background

This gene encodes a cytoskeletal LIM protein that binds to actin filaments via a domain that is homologous to erythrocyte dematin. LIM domains, found in over 60 proteins, play key roles in the regulation of developmental pathways. LIM domains also function as protein-binding interfaces, mediating specific protein-protein interactions. The protein encoded by this gene could mediate such interactions between actin filaments and cytoplasmic targets. Alternatively spliced transcript variants encoding different isoforms have been identified.?

Note: This product is for in vitro research use only