

## ACTL8 Antibody

Catalog No: #36030

Orders: [order@signalwayantibody.com](mailto:order@signalwayantibody.com)Support: [tech@signalwayantibody.com](mailto:tech@signalwayantibody.com)

## Description

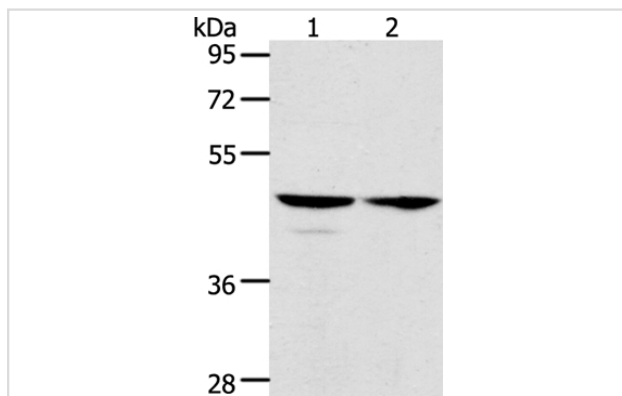
Product Name	ACTL8 Antibody
Host Species	Rabbit
Clonality	Polyclonal
Purification	Antigen affinity purification.
Applications	WB IHC
Species Reactivity	Hu
Specificity	The antibody detects endogenous levels of total ACTL8 protein.
Immunogen Type	Recombinant Protein
Immunogen Description	Fusion protein corresponding to residues near the C terminal of human Actin-like 8
Target Name	ACTL8
Other Names	CT57
Accession No.	Swiss-Prot#: Q9H568NCBI Gene ID: 81569Gene Accssion: BC028909
Uniprot	Q9H568
GeneID	81569;
SDS-PAGE MW	41kd
Concentration	0.7mg/ml
Formulation	Rabbit IgG in pH7.4 PBS, 0.05% NaN <sub>3</sub> , 40% Glycerol.
Storage	Store at -20°C

## Application Details

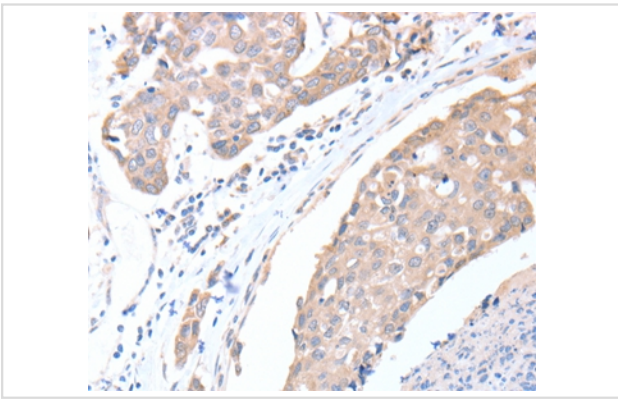
Western blotting: 1:500-1:2000

Immunohistochemistry: 1:15-1:50

## Images



Gel: 10%SDS-PAGE  
 Lysates (from left to right): Hela and A549 cell  
 Amount of lysate: 40ug per lane  
 Primary antibody: 1/350 dilution  
 Secondary antibody dilution: 1/8000  
 Exposure time: 5 seconds



Immunohistochemical analysis of paraffin-embedded Human breast cancer tissue using #36030 at dilution 1/15.

## Background

This protein belongs to the actin family. Actin-like 8 is a protein in humans that is encoded by the ACTL8 gene. The high levels of expression in testis and pancreas and weak expression in placenta. The subcellular location of this protein is in cytoplasm, cytoskeleton.

Note: This product is for in vitro research use only