

ACTRT1 Antibody

Catalog No: #36033

Orders: order@signalwayantibody.com

Support: tech@signalwayantibody.com

Description

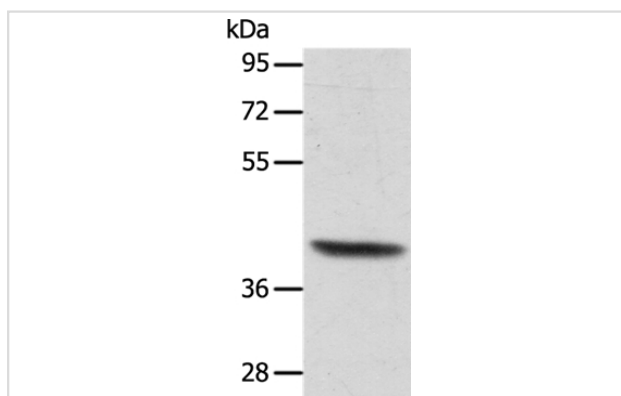
Product Name	ACTRT1 Antibody
Host Species	Rabbit
Clonality	Polyclonal
Purification	Antigen affinity purification.
Applications	WB IHC
Species Reactivity	Hu
Specificity	The antibody detects endogenous levels of total ACTRT1 protein.
Immunogen Type	Recombinant Protein
Immunogen Description	Fusion protein corresponding to residues near the C terminal of human Actin-related protein T1
Target Name	ACTRT1
Other Names	AIP1; ARIP1; ARPT1; HSD27
Accession No.	Swiss-Prot#: Q8TDG2NCBI Gene ID: 139741Gene Accssion: BC014597
Uniprot	Q8TDG2
GeneID	139741;
SDS-PAGE MW	42kd
Concentration	0.7mg/ml
Formulation	Rabbit IgG in pH7.4 PBS, 0.05% NaN ₃ , 40% Glycerol.
Storage	Store at -20°C

Application Details

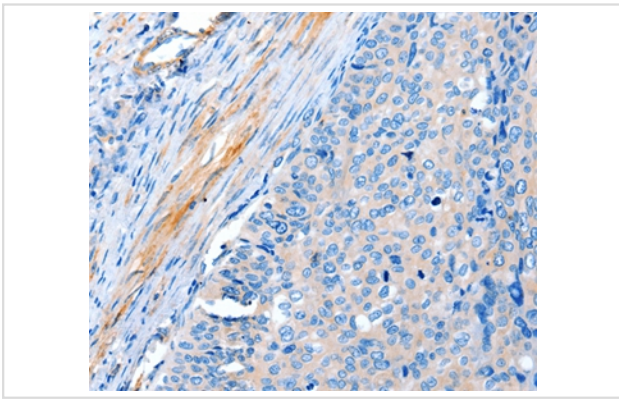
Western blotting: 1:200-1:1000

Immunohistochemistry: 1:10-1:50

Images



Gel: 10%SDS-PAGE
Lysates (from left to right): Human lymphoma tissue
Amount of lysate: 40ug per lane
Primary antibody: 1/350 dilution
Secondary antibody dilution: 1/8000
Exposure time: 5 seconds



Immunohistochemical analysis of paraffin-embedded Human cervical cancer tissue using #36033 at dilution 1/15.

Background

This gene encodes a protein related to the cytoskeletal protein beta-actin. This protein is a major component of the calyx in the perinuclear theca of mammalian sperm heads, and it therefore likely functions in spermatid formation. This gene is intronless and is similar to a related gene located on chromosome 1. A related pseudogene has also been identified approximately 75 kb downstream of this gene on chromosome X.

Note: This product is for in vitro research use only