

ADAM2 Antibody

Catalog No: #36041

Orders: order@signalwayantibody.comSupport: tech@signalwayantibody.com

Description

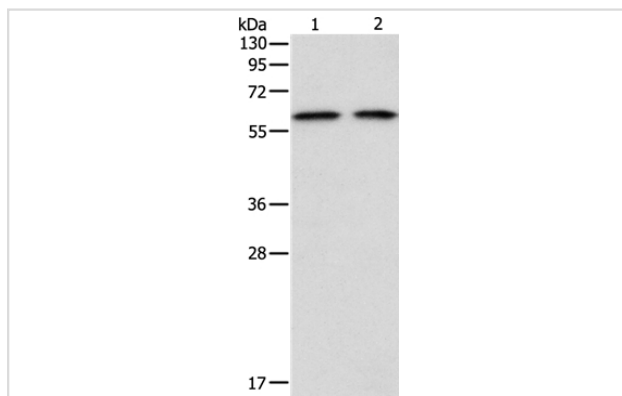
Product Name	ADAM2 Antibody
Host Species	Rabbit
Clonality	Polyclonal
Purification	Antigen affinity purification.
Applications	WB IHC
Species Reactivity	Hu
Specificity	The antibody detects endogenous levels of total ADAM2 protein.
Immunogen Type	Recombinant Protein
Immunogen Description	Fusion protein corresponding to residues near the C terminal of human ADAM metalloproteinase domain 2
Target Name	ADAM2
Other Names	CT15; FTNB; PH30; CRYN1; CRYN2; PH-30b
Accession No.	Swiss-Prot#: Q99965NCBI Gene ID: 2515Gene Accssion: BC064547
Uniprot	Q99965
GeneID	2515;
SDS-PAGE MW	64kd
Concentration	0.7mg/ml
Formulation	Rabbit IgG in pH7.4 PBS, 0.05% NaN ₃ , 40% Glycerol.
Storage	Store at -20°C

Application Details

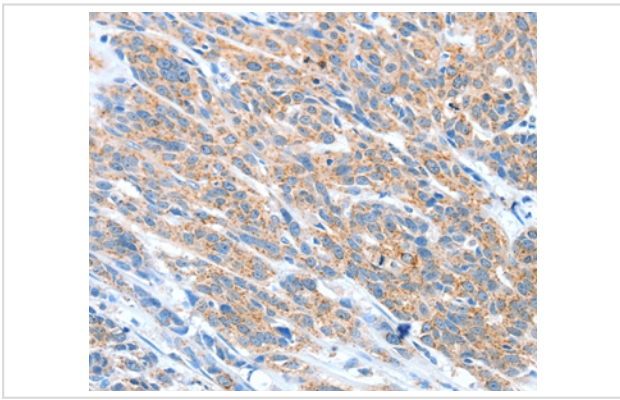
Western blotting: 1:200-1:1000

Immunohistochemistry: 1:25-1:100

Images



Gel: 8%SDS-PAGE
Lysates (from left to right): 293T and hela cell
Amount of lysate: 40ug per lane
Primary antibody: 1/300 dilution
Secondary antibody dilution: 1/8000
Exposure time: 15 seconds



Immunohistochemical analysis of paraffin-embedded Human esophagus cancer tissue using #36041 at dilution 1/20.

Background

This gene encodes a member of the ADAM (a disintegrin and metalloprotease domain) family. Members of this family are membrane-anchored proteins structurally related to snake venom disintegrins, and have been implicated in a variety of biological processes involving cell-cell and cell-matrix interactions, including fertilization, muscle development, and neurogenesis. This member is a subunit of an integral sperm membrane glycoprotein called fertilin, which plays an important role in sperm-egg interactions.

Note: This product is for in vitro research use only