

## ADAM17 Antibody

Catalog No: #36043

Orders: [order@signalwayantibody.com](mailto:order@signalwayantibody.com)Support: [tech@signalwayantibody.com](mailto:tech@signalwayantibody.com)

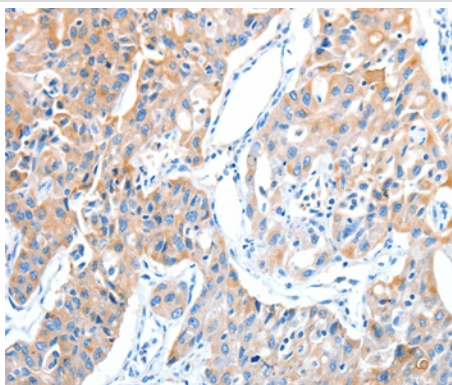
## Description

Product Name	ADAM17 Antibody
Host Species	Rabbit
Clonality	Polyclonal
Purification	Antigen affinity purification.
Applications	IHC
Species Reactivity	Hu
Specificity	The antibody detects endogenous levels of total ADAM17 protein.
Immunogen Type	Recombinant Protein
Immunogen Description	Full length fusion protein
Target Name	ADAM17
Other Names	CSVP; TACE; NISBD; ADAM18; CD156B
Accession No.	Swiss-Prot#: P78536NCBI Gene ID: 6868Gene Accssion: BC062687
Uniprot	P78536
GeneID	6868;
Concentration	0.5mg/ml
Formulation	Rabbit IgG in pH7.4 PBS, 0.05% NaN <sub>3</sub> , 40% Glycerol.
Storage	Store at -20°C

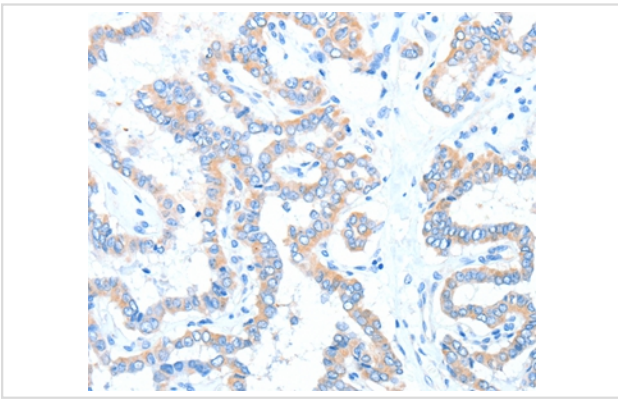
## Application Details

Immunohistochemistry: 1:15-1:50

## Images



Immunohistochemical analysis of paraffin-embedded Human thyroid cancer tissue using #36043 at dilution 1/15.



Immunohistochemical analysis of paraffin-embedded Human lung cancer tissue using #36043 at dilution 1/15.

## Background

This gene encodes a member of the ADAM (a disintegrin and metalloprotease domain) family. Members of this family are membrane-anchored proteins structurally related to snake venom disintegrins, and have been implicated in a variety of biologic processes involving cell-cell and cell-matrix interactions, including fertilization, muscle development, and neurogenesis. The protein encoded by this gene functions as a tumor necrosis factor-alpha converting enzyme; binds mitotic arrest deficient 2 protein; and also plays a prominent role in the activation of the Notch signaling pathway.?

Note: This product is for in vitro research use only