

ADAMTSL1 Antibody

Catalog No: #36045

Orders: order@signalwayantibody.comSupport: tech@signalwayantibody.com

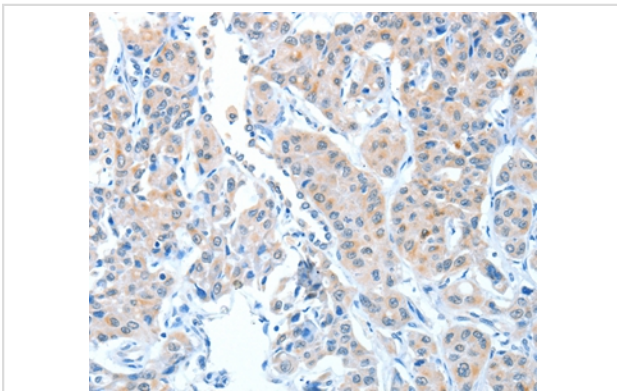
Description

Product Name	ADAMTSL1 Antibody
Host Species	Rabbit
Clonality	Polyclonal
Purification	Antigen affinity purification.
Applications	IHC
Species Reactivity	Hu
Specificity	The antibody detects endogenous levels of total ADAMTSL1 protein.
Immunogen Type	Recombinant Protein
Immunogen Description	Fusion protein corresponding to a region derived from internal residues of human ADAMTS-like 1
Target Name	ADAMTSL1
Other Names	C9orf94; PUNCTIN; ADAMTSR1; ADAMTSL-1
Accession No.	Swiss-Prot#: Q8N6G6NCBI Gene ID: 92949Gene Accsion: BC100788
Uniprot	Q8N6G6
GeneID	92949;
Concentration	1mg/ml
Formulation	Rabbit IgG in pH7.4 PBS, 0.05% NaN ₃ , 40% Glycerol.
Storage	Store at -20°C

Application Details

Immunohistochemistry: 1:15-1:50

Images



Immunohistochemical analysis of paraffin-embedded Human lung cancer tissue using #36045 at dilution 1/25.

Background

This gene encodes a secreted protein and member of the ADAMTS (a disintegrin and metalloproteinase with thrombospondin motif) family. This protein lacks the metalloproteinase and disintegrin-like domains, which are typical of the ADAMTS family, but contains other ADAMTS domains, including the thrombospondin type 1 motif. This protein may have important functions in the extracellular matrix. Alternative splicing results in multiple transcript variants encoding distinct proteins.?

Note: This product is for in vitro research use only