

ADCK1 Antibody

Catalog No: #36048

Orders: order@signalwayantibody.comSupport: tech@signalwayantibody.com

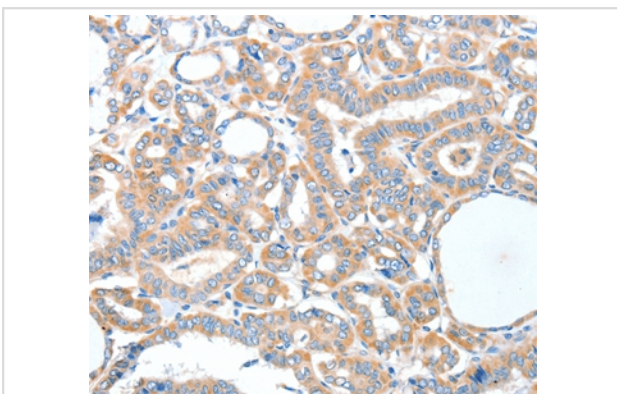
Description

Product Name	ADCK1 Antibody
Host Species	Rabbit
Clonality	Polyclonal
Purification	Antigen affinity purification.
Applications	IHC
Species Reactivity	Hu
Specificity	The antibody detects endogenous levels of total ADCK1 protein.
Immunogen Type	Recombinant Protein
Immunogen Description	Fusion protein corresponding to a region derived from internal residues of human aarF domain containing kinase 1
Target Name	ADCK1
Other Names	isoform CRA_b;FLJ39600;AarF domain containing kinase 1
Accession No.	Swiss-Prot#: Q86TW2NCBI Gene ID: 57143Gene Accssion: BC058906
Uniprot	Q86TW2
GeneID	57143;
Concentration	1.5mg/ml
Formulation	Rabbit IgG in pH7.4 PBS, 0.05% NaN ₃ , 40% Glycerol.
Storage	Store at -20°C

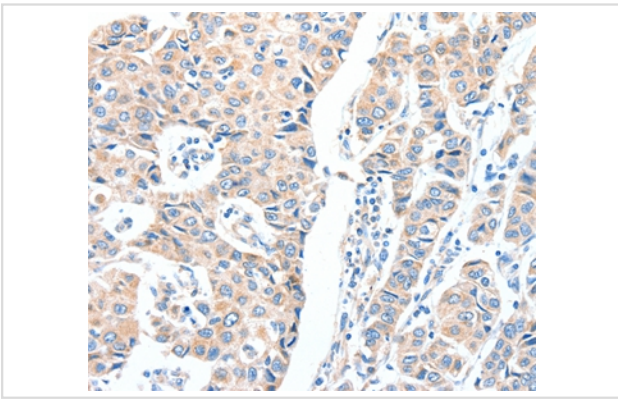
Application Details

Immunohistochemistry: 1:25-1:100

Images



Immunohistochemical analysis of paraffin-embedded Human breast cancer tissue using #36048 at dilution 1/40.



Immunohistochemical analysis of paraffin-embedded Human thyroid cancer tissue using #36048 at dilution 1/40.

Background

The function of this protein is not yet clear. It is not known if it has protein kinase activity and what type of substrate it would phosphorylate (Ser, Thr or Tyr).

Note: This product is for in vitro research use only