

ADSL Antibody

Catalog No: #36051

Orders: order@signalwayantibody.comSupport: tech@signalwayantibody.com

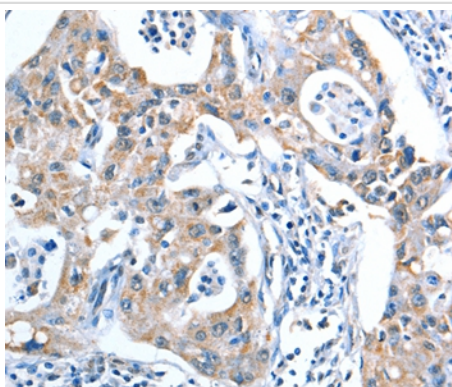
Description

Product Name	ADSL Antibody
Host Species	Rabbit
Clonality	Polyclonal
Purification	Antigen affinity purification.
Applications	IHC
Species Reactivity	Hu
Specificity	The antibody detects endogenous levels of total ADSL protein.
Immunogen Type	Recombinant Protein
Immunogen Description	Fusion protein corresponding to residues near the C terminal of human adenylosuccinate lyase
Target Name	ADSL
Other Names	ASL; AMPS; ASASE
Accession No.	Swiss-Prot#: P30566NCBI Gene ID: 158Gene Accssion: BC000253
Uniprot	P30566
GeneID	158;
Concentration	0.7mg/ml
Formulation	Rabbit IgG in pH7.4 PBS, 0.05% NaN ₃ , 40% Glycerol.
Storage	Store at -20°C

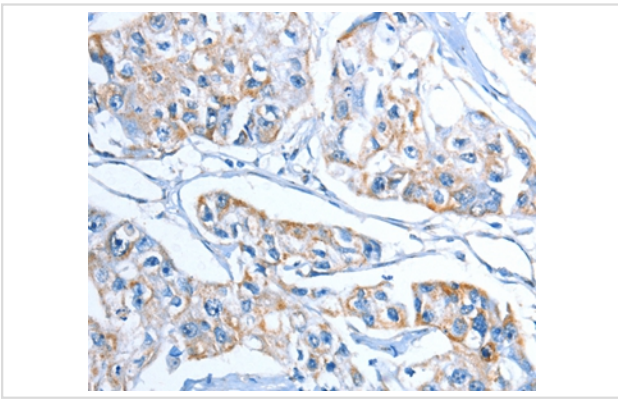
Application Details

Immunohistochemistry: 1:15-1:50

Images



Immunohistochemical analysis of paraffin-embedded Human breast cancer tissue using #36051 at dilution 1/20.



Immunohistochemical analysis of paraffin-embedded Human liver cancer tissue using #36051 at dilution 1/20.

Background

Adenylosuccinate lyase is involved in both de novo synthesis of purines and formation of adenosine monophosphate from inosine monophosphate. It catalyzes two reactions in AMP biosynthesis: the removal of a fumarate from succinylaminoimidazole carboxamide (SAICA) ribotide to give aminoimidazole carboxamide ribotide (AICA) and removal of fumarate from adenylosuccinate to give AMP. Adenylosuccinase deficiency results in succinylpurinemic autism, psychomotor retardation, and, in some cases, growth retardation associated with muscle wasting and epilepsy. Two transcript variants encoding different isoforms have been found for this gene.

Note: This product is for in vitro research use only