

CTBP2 antibody

Catalog No: #22082

Orders: order@signalwayantibody.com

Support: tech@signalwayantibody.com

Description

Product Name	CTBP2 antibody
Host Species	Rabbit
Clonality	Polyclonal
Purification	Purified by antigen-affinity chromatography.
Applications	WB IF
Species Reactivity	Hu
Immunogen Type	Recombinant protein
Immunogen Description	Recombinant protein fragment contain a sequence corresponding to a region within amino acids 737 and 927 of Human CTBP2
Target Name	CTBP2
Accession No.	Swiss-Prot:P56545Gene ID:1488
Uniprot	P56545
GeneID	1488;
Concentration	0.3mg/ml
Formulation	Supplied in 0.1M Tris-buffered saline with 10% Glycerol (pH7.0). 0.01% Thimerosal was added as a preservative.
Storage	Store at -20°C for long term preservation (recommended). Store at 4°C for short term use.

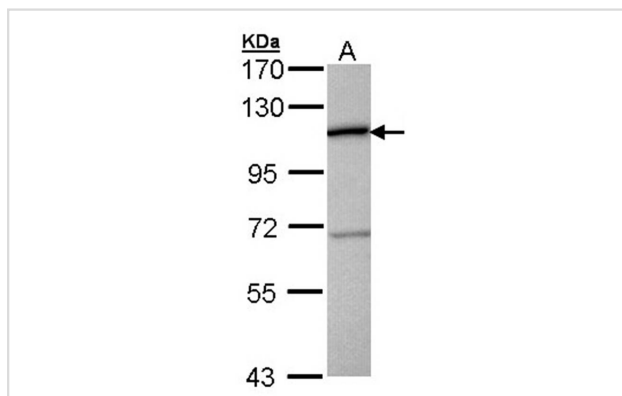
Application Details

Predicted MW: 106kd

Western blotting: 1:500-1:3000

Immunofluorescence: 1:100-1:200

Images



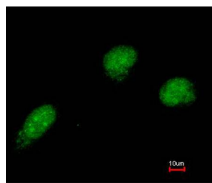
Sample (30 ug of whole cell lysate)

A: Molt-4

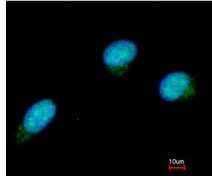
7.5% SDS PAGE

Primary antibody diluted at 1: 500

Immunofluorescence analysis of paraformaldehyde-fixed HeLa, using CTBP2 antibody at 1: 100 dilution.



Merged with DNA probe



Background

This gene produces alternative transcripts encoding two distinct proteins. One protein is a transcriptional repressor, while the other isoform is a major component of specialized synapses known as synaptic ribbons. Both proteins contain a NAD⁺ binding domain similar to NAD⁺-dependent 2-hydroxyacid dehydrogenases. A portion of the 3' untranslated region was used to map this gene to chromosome 21q21.3; however, it was noted that similar loci elsewhere in the genome are likely. Blast analysis shows that this gene is present on chromosome 10. [provided by RefSeq]

Note: This product is for in vitro research use only