

AEBP2 Antibody

Catalog No: #36055

Orders: order@signalwayantibody.comSupport: tech@signalwayantibody.com

Description

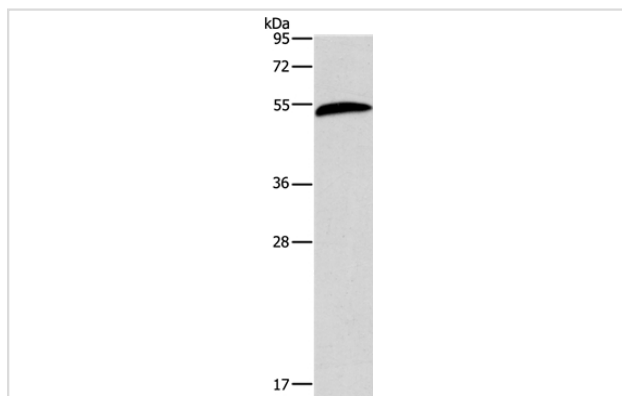
Product Name	AEBP2 Antibody
Host Species	Rabbit
Clonality	Polyclonal
Purification	Antigen affinity purification.
Applications	WB IHC
Species Reactivity	Hu Ms
Specificity	The antibody detects endogenous levels of total AEBP2 protein.
Immunogen Type	Recombinant Protein
Immunogen Description	Fusion protein corresponding to residues near the C terminal of human Adipocyte enhancer-binding protein 2
Target Name	AEBP2
Other Names	MGC17922;AE-binding protein 2;Zinc finger protein AEBP2
Accession No.	Swiss-Prot#: Q6ZN18NCBI Gene ID: 121536Gene Accssion: BC015624
Uniprot	Q6ZN18
GeneID	121536;
SDS-PAGE MW	54kd
Concentration	0.9mg/ml
Formulation	Rabbit IgG in pH7.4 PBS, 0.05% NaN ₃ , 40% Glycerol.
Storage	Store at -20°C

Application Details

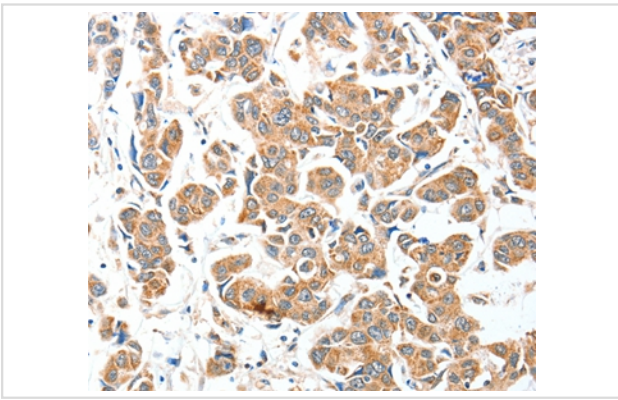
Western blotting: 1:200-1:1000

Immunohistochemistry: 1:25-1:100

Images



Gel: 12%SDS-PAGE
 Lysates (from left to right): Mouse liver tissue
 Amount of lysate: 60ug per lane
 Primary antibody: 1/225 dilution
 Secondary antibody dilution: 1/8000
 Exposure time: 20 seconds



Immunohistochemical analysis of paraffin-embedded Human breast cancer tissue using #36055 at dilution 1/25.

Background

AEBP2 is a zinc finger protein that has been shown to interact with the mammalian Polycomb Repression Complex 2 (PRC2). AEBP2 is an evolutionarily well-conserved gene that is found in the animals ranging from flying insects to mammals. The transcription of mammalian AEBP2 is driven by two alternative promoters and produces at least two isoforms of the protein. These isoforms show developmental stage-specific expression patterns: the adult-specific larger form (51 kDa) and the embryo-specific smaller form (32 kDa).

Note: This product is for in vitro research use only