

AFAP1 Antibody

Catalog No: #36056

Orders: order@signalwayantibody.com

Support: tech@signalwayantibody.com

Description

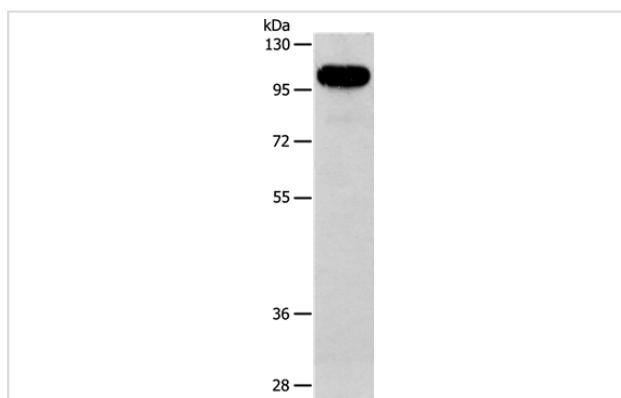
Product Name	AFAP1 Antibody
Host Species	Rabbit
Clonality	Polyclonal
Purification	Antigen affinity purification.
Applications	WB IHC
Species Reactivity	Hu
Specificity	The antibody detects endogenous levels of total AFAP1 protein.
Immunogen Type	Recombinant Protein
Immunogen Description	Fusion protein corresponding to residues near the C terminal of human Actin filament associated protein 1
Target Name	AFAP1
Other Names	AFAP; AFAP110; AFAP-110
Accession No.	Swiss-Prot#: Q8N556NCBI Gene ID: 60312Gene Accssion: BC032777
Uniprot	Q8N556
GeneID	60312;
SDS-PAGE MW	90kd
Concentration	0.8mg/ml
Formulation	Rabbit IgG in pH7.4 PBS, 0.05% NaN ₃ , 40% Glycerol.
Storage	Store at -20°C

Application Details

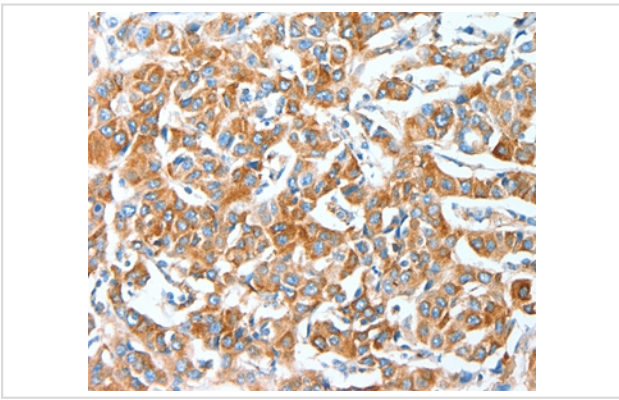
Western blotting: 1:200-1:1000

Immunohistochemistry: 1:25-1:100

Images



Gel: 8%SDS-PAGE
Lysate: 40ug A172 cell
Primary antibody: 1/134 dilution
Secondary antibody dilution: 1/8000
Exposure time: 10 seconds



Immunohistochemical analysis of paraffin-embedded Human breast cancer tissue using #36056 at dilution 1/20.

Background

The protein encoded by this gene is a Src binding partner. It may represent a potential modulator of actin filament integrity in response to cellular signals, and may function as an adaptor protein by linking Src family members and/or other signaling proteins to actin filaments. Multiple transcript variants encoding different isoforms have been found for this gene.

Note: This product is for in vitro research use only