

Description

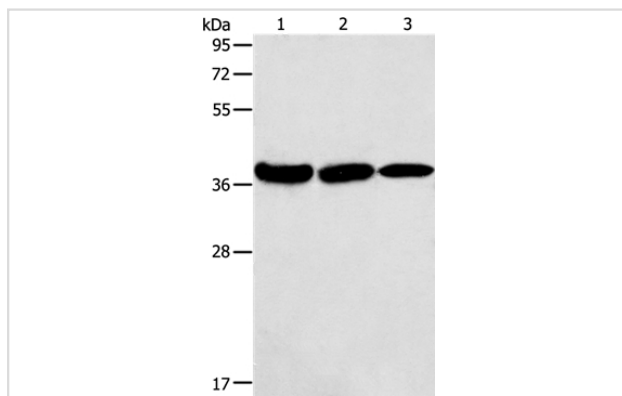
Product Name	AGA Antibody
Host Species	Rabbit
Clonality	Polyclonal
Purification	Antigen affinity purification.
Applications	WB IHC
Species Reactivity	Hu Ms
Specificity	The antibody detects endogenous levels of total AGA protein.
Immunogen Type	Recombinant Protein
Immunogen Description	Fusion protein corresponding to a region derived from internal residues of human Aspartylglucosaminidase
Target Name	AGA
Other Names	GA; AGU; ASRG
Accession No.	Swiss-Prot#: P20933NCBI Gene ID: 175Gene Accssion: BC012392
Uniprot	P20933
GeneID	175;
SDS-PAGE MW	37kd
Concentration	0.8mg/ml
Formulation	Rabbit IgG in pH7.4 PBS, 0.05% NaN ₃ , 40% Glycerol.
Storage	Store at -20°C

Application Details

Western blotting: 1:200-1:1000

Immunohistochemistry: 1:15-1:50

Images



Gel: 10%SDS-PAGE

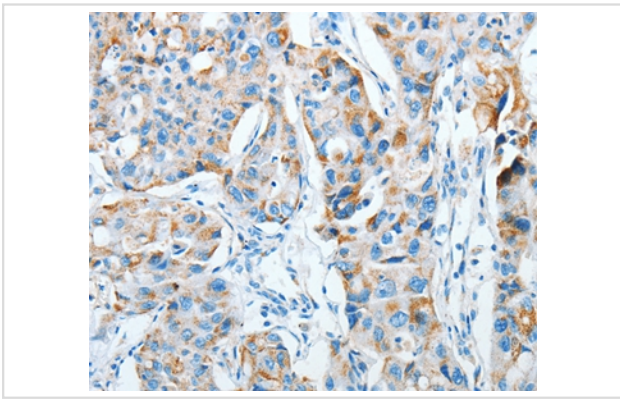
Lysates (from left to right): Mouse kidney tissue, human testis and thyroid cancer tissue

Amount of lysate: 40ug per lane

Primary antibody: 1/100 dilution

Secondary antibody dilution: 1/8000

Exposure time: 10 seconds



Immunohistochemical analysis of paraffin-embedded Human lung cancer tissue using #36057 at dilution 1/20.

Background

Aspartylglucosaminidase is involved in the catabolism of N-linked oligosaccharides of glycoproteins. It cleaves asparagine from N-acetylglucosamines as one of the final steps in the lysosomal breakdown of glycoproteins. The lysosomal storage disease aspartylglycosaminuria is caused by a deficiency in the AGA enzyme. Alternatively spliced transcript variants have been identified.?

Note: This product is for in vitro research use only