

AGBL2 Antibody

Catalog No: #36058

Orders: order@signalwayantibody.comSupport: tech@signalwayantibody.com

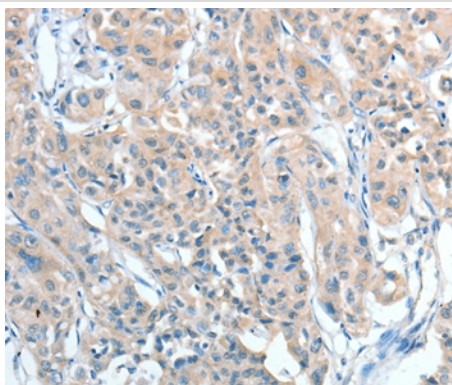
Description

Product Name	AGBL2 Antibody
Host Species	Rabbit
Clonality	Polyclonal
Purification	Antigen affinity purification.
Applications	IHC
Species Reactivity	Hu
Specificity	The antibody detects endogenous levels of total AGBL2 protein.
Immunogen Type	Recombinant Protein
Immunogen Description	Full length fusion protein
Target Name	AGBL2
Other Names	CBPC2; CCP2; FLJ23598
Accession No.	Swiss-Prot#: Q5U5Z8NCBI Gene ID: 79841Gene Accssion: BC028200
Uniprot	Q5U5Z8
GeneID	79841;
Concentration	1mg/ml
Formulation	Rabbit IgG in pH7.4 PBS, 0.05% NaN ₃ , 40% Glycerol.
Storage	Store at -20°C

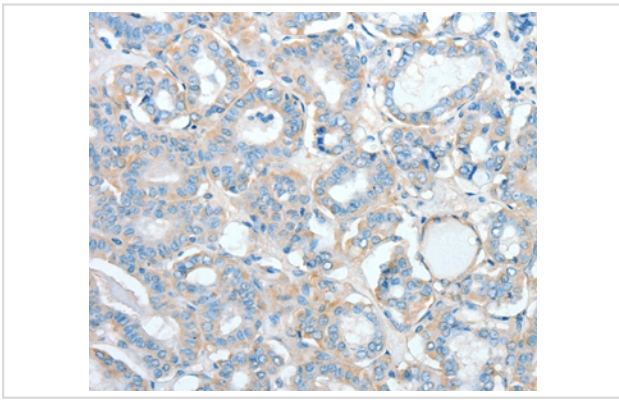
Application Details

Immunohistochemistry: 1:25-1:100

Images



Immunohistochemical analysis of paraffin-embedded Human thyroid cancer tissue using #36058 at dilution 1/25.



Immunohistochemical analysis of paraffin-embedded Human lung cancer tissue using #36058 at dilution 1/25.

Background

Metalloproteinase that may play a role in the processing of tubulin. Knockdown of AGL2 results in a failure of the cell to dephosphorylate the C-terminal EEY region of α -tubulin and indicates that, it is a candidate for the long sought after tubulin tyrosine carboxypeptidase important in regulation of microtubule dynamics. RARRES1, its interacting partners AGL2, Eg5/KIF11, another EEY bearing protein (EB1), and the microtubule tyrosination cycle are important in tumorigenesis and identify a novel area for therapeutic intervention.

Note: This product is for in vitro research use only