

## AGBL5 Antibody

Catalog No: #36059

Orders: [order@signalwayantibody.com](mailto:order@signalwayantibody.com)Support: [tech@signalwayantibody.com](mailto:tech@signalwayantibody.com)

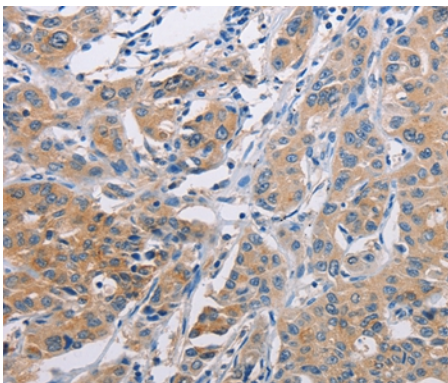
## Description

Product Name	AGBL5 Antibody
Host Species	Rabbit
Clonality	Polyclonal
Purification	Antigen affinity purification.
Applications	IHC
Species Reactivity	Hu
Specificity	The antibody detects endogenous levels of total AGBL5 protein.
Immunogen Type	Recombinant Protein
Immunogen Description	Fusion protein corresponding to residues near the C terminal of human ATP/GTP binding protein-like 5
Target Name	AGBL5
Other Names	CBPC5;CCP5;FLJ21839
Accession No.	Swiss-Prot#: Q8NDL9NCBI Gene ID: 60509Gene Accssion: BC007415
Uniprot	Q8NDL9
GeneID	60509;
Concentration	1.1mg/ml
Formulation	Rabbit IgG in pH7.4 PBS, 0.05% NaN <sub>3</sub> , 40% Glycerol.
Storage	Store at -20°C

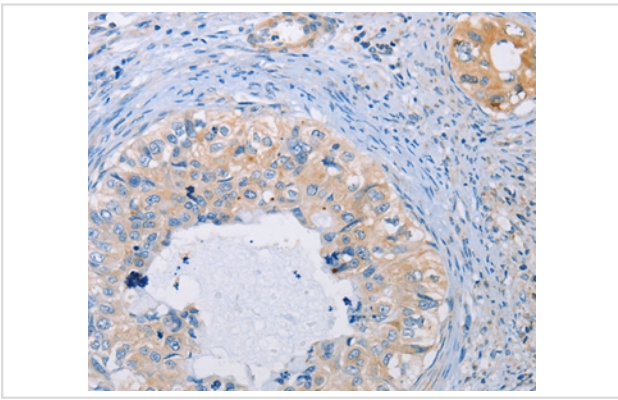
## Application Details

Immunohistochemistry: 1:25-1:100

## Images



Immunohistochemical analysis of paraffin-embedded Human cervical cancer tissue using #36059 at dilution 1/30.



Immunohistochemical analysis of paraffin-embedded Human lung cancer tissue using #36059 at dilution 1/30.

## Background

Metalloproteinase that mediates tubulin deglutamylation. Specifically catalyzes the deglutamylation of the branching point glutamate side chains generated by post-translational glutamylation in proteins such as tubulins. In contrast, it is not able to act as a long-chain deglutamylase that shortens long polyglutamate chains, a process catalyzed by AGTPBP1/ CCP1, AGL1/CCP4 and AGL4/CCP6.

Note: This product is for in vitro research use only