

AGBL3 Antibody

Catalog No: #36060

Orders: order@signalwayantibody.com

Support: tech@signalwayantibody.com

Description

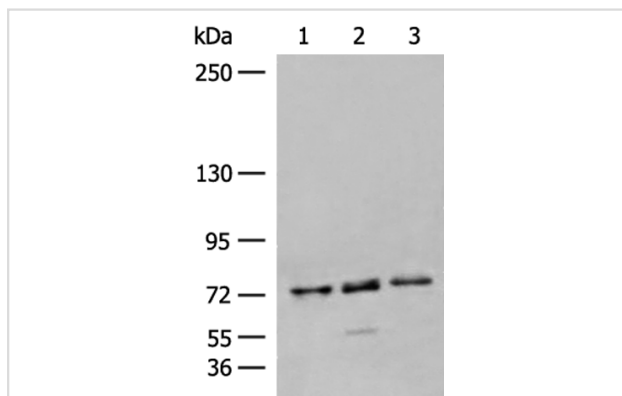
Product Name	AGBL3 Antibody
Host Species	Rabbit
Clonality	Polyclonal
Purification	Antigen affinity purification.
Applications	WB Elisa
Species Reactivity	Hu Ms
Specificity	The antibody detects endogenous levels of total AGBL3 protein.
Immunogen Type	Recombinant Protein
Immunogen Description	Fusion protein corresponding to residues near the C terminal of human ATP/GTP binding protein-like 3
Target Name	AGBL3
Other Names	CCP3
Accession No.	Swiss-Prot#: Q8NEM8NCBI Gene ID: 340351Gene Accssion: BC030651
Uniprot	Q8NEM8
GeneID	340351;
SDS-PAGE MW	116kd
Concentration	1mg/ml
Formulation	Rabbit IgG in pH7.4 PBS, 0.05% NaN ₃ , 40% Glycerol.
Storage	Store at -20°C

Application Details

Western blotting: 1:200-1:1000

ELISA dilution: 1:5000-1:10000

Images



Gel: 6%SDS-PAGE Lysate: 40 μ g Lane 1-3: Human fetal liver tissue, Mouse liver tissue, TM4 cell lysates
 Primary antibody: 36060(AGBL3 Antibody) at dilution 1/250
 Secondary antibody: Goat anti rabbit IgG at 1/8000 dilution
 Exposure time: 1 minute

Background

This protein belongs to the peptidase M14 family. It has a function in the processing of cytosolic proteins such as alpha-tubulin, which is known to be

modified by the removal of a C-terminal tyrosine. Evrey subunit binds 1 zinc ion. It has high levels expression in digestive and blood/hematopoietic system, like intestine, urinary, kidney and bone marrow.

Note: This product is for in vitro research use only