

## AGXT2L2 Antibody

Catalog No: #36066

Orders: [order@signalwayantibody.com](mailto:order@signalwayantibody.com)Support: [tech@signalwayantibody.com](mailto:tech@signalwayantibody.com)

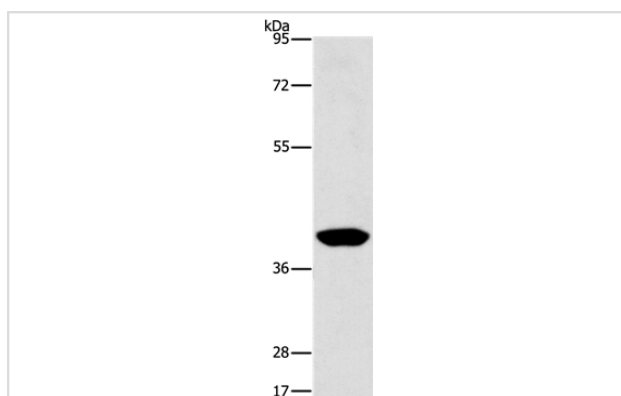
## Description

Product Name	AGXT2L2 Antibody
Host Species	Rabbit
Clonality	Polyclonal
Purification	Antigen affinity purification.
Applications	WB
Species Reactivity	Hu
Specificity	The antibody detects endogenous levels of total AGXT2L2 protein.
Immunogen Type	Recombinant Protein
Immunogen Description	Full length fusion protein
Target Name	AGXT2L2
Other Names	PHLU; AGXT2L2
Accession No.	Swiss-Prot#: Q8IUZ5NCBI Gene ID: 85007Gene Accssion: BC008009
Uniprot	Q8IUZ5
GeneID	85007;
SDS-PAGE MW	50kd
Concentration	1mg/ml
Formulation	Rabbit IgG in pH7.4 PBS, 0.05% NaN <sub>3</sub> , 40% Glycerol.
Storage	Store at -20°C

## Application Details

Western blotting: 1:500-1:2000

## Images



Gel: 8%SDS-PAGE  
 Lysates (from left to right): Human lymphoma tissue  
 Amount of lysate: 40ug per lane  
 Primary antibody: 1/500 dilution  
 Secondary antibody dilution: 1/8000  
 Exposure time: 30 seconds

## Background

This is a nuclear gene encoding a mitochondrial enzyme that catalyzes the conversion of 5-phosphonoxy-L-lysine to ammonia, inorganic phosphate, and 2-aminoadipate semialdehyde. Mutations in this gene may cause phosphohydroxylysinuria. Alternative splicing results in multiple transcript

variants.

---

Note: This product is for in vitro research use only