

## AKAP8L Antibody

Catalog No: #36068

Orders: order@signalwayantibody.com

Support: tech@signalwayantibody.com

## Description

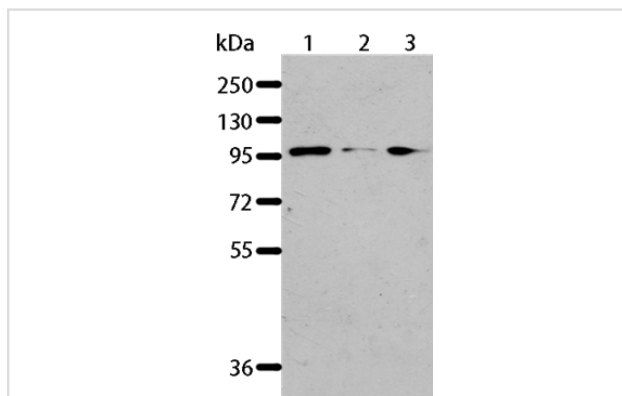
Product Name	AKAP8L Antibody
Host Species	Rabbit
Clonality	Polyclonal
Purification	Antigen affinity purification.
Applications	WB IHC
Species Reactivity	Hu
Specificity	The antibody detects endogenous levels of total AKAP8L protein.
Immunogen Type	Recombinant Protein
Immunogen Description	Fusion protein corresponding to residues near the C terminal of human A kinase (PRKA) anchor protein 8-like
Target Name	AKAP8L
Other Names	HA95; HAP95; NAKAP; NAKAP95
Accession No.	Swiss-Prot#: Q9ULX6NCBI Gene ID: 26993Gene Accssion: BC000713
Uniprot	Q9ULX6
GeneID	26993;
SDS-PAGE MW	72kd
Concentration	0.7mg/ml
Formulation	Rabbit IgG in pH7.4 PBS, 0.05% NaN <sub>3</sub> , 40% Glycerol.
Storage	Store at -20°C

## Application Details

Western blotting: 1:200-1:1000

Immunohistochemistry: 1:25-1:100

## Images



Gel: 8%SDS-PAGE

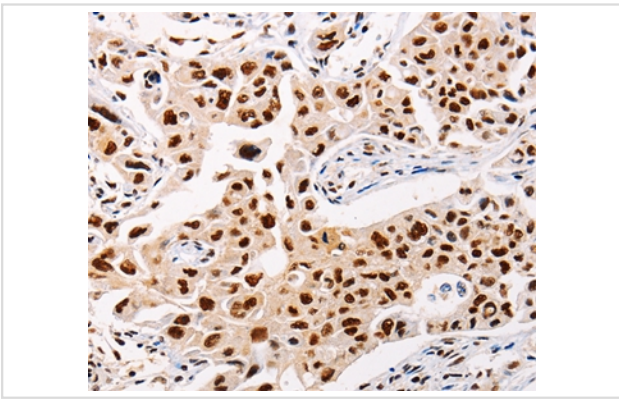
Lysates (from left to right): Jurkat, 293T and K562 cell

Amount of lysate: 40ug per lane

Primary antibody: 1/117 dilution

Secondary antibody dilution: 1/8000

Exposure time: 30 seconds



Immunohistochemical analysis of paraffin-embedded Human lung cancer tissue using #36068 at dilution 1/20.

## Background

A-kinase anchor protein 8-like is an enzyme that in humans is encoded by the AKAP8L gene. Could play a role in constitutive transport element (CTE)-mediated gene expression. Does not seem to be implicated in the binding of regulatory subunit II of PKA. May be involved in nuclear envelope breakdown and chromatin condensation. May regulate the initiation phase of DNA replication when associated with TMPO-beta.

Note: This product is for in vitro research use only