

ALAS1 Antibody

Catalog No: #36073

Orders: order@signalwayantibody.comSupport: tech@signalwayantibody.com

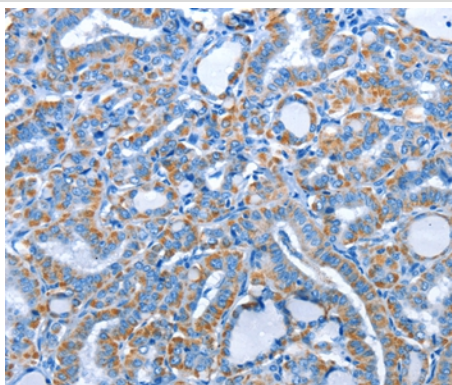
Description

Product Name	ALAS1 Antibody
Host Species	Rabbit
Clonality	Polyclonal
Purification	Antigen affinity purification.
Applications	IHC
Species Reactivity	Hu
Specificity	The antibody detects endogenous levels of total ALAS1 protein.
Immunogen Type	Recombinant Protein
Immunogen Description	Fusion protein corresponding to residues near the C terminal of human aminolevulinate, delta-, synthase 1
Target Name	ALAS1
Other Names	ALAS; MIG4; ALAS3; ALASH
Accession No.	Swiss-Prot#: P13196NCBI Gene ID: 211Gene Accssion: BC011798
Uniprot	P13196
GeneID	211;
Concentration	1.1mg/ml
Formulation	Rabbit IgG in pH7.4 PBS, 0.05% NaN ₃ , 40% Glycerol.
Storage	Store at -20°C

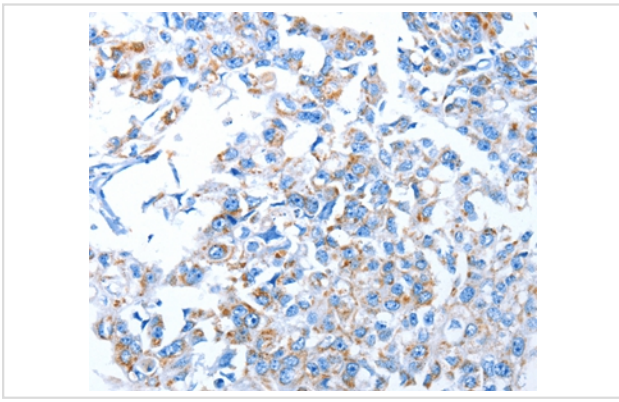
Application Details

Immunohistochemistry: 1:25-1:100

Images



Immunohistochemical analysis of paraffin-embedded Human breast cancer tissue using #36073 at dilution 1/30.



Immunohistochemical analysis of paraffin-embedded Human thyroid cancer tissue using #36073 at dilution 1/30.

Background

This gene encodes the mitochondrial enzyme which catalyzes the rate-limiting step in heme (iron-protoporphyrin) biosynthesis. The enzyme encoded by this gene is the housekeeping enzyme; a separate gene encodes a form of the enzyme that is specific for erythroid tissue. The level of the mature encoded protein is regulated by heme: high levels of heme down-regulate the mature enzyme in mitochondria while low heme levels up-regulate. A pseudogene of this gene is located on chromosome 12. Multiple alternatively spliced variants, encoding the same protein, have been identified.

Note: This product is for in vitro research use only