

ALAS2 Antibody

Catalog No: #36074

Orders: order@signalwayantibody.comSupport: tech@signalwayantibody.com

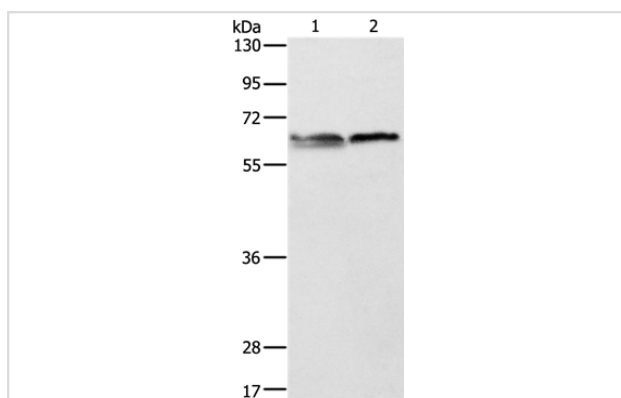
Description

Product Name	ALAS2 Antibody
Host Species	Rabbit
Clonality	Polyclonal
Purification	Antigen affinity purification.
Applications	WB
Species Reactivity	Hu
Specificity	The antibody detects endogenous levels of total ALAS2 protein.
Immunogen Type	Recombinant Protein
Immunogen Description	Fusion protein corresponding to residues near the C terminal of human aminolevulinate, delta-, synthase 2
Target Name	ALAS2
Other Names	ASB; ANH1; XLSA; ALASE; XLDPP; XLEPP; ALAS-E
Accession No.	Swiss-Prot#: P22557NCBI Gene ID: 212Gene Accssion: BC030230
Uniprot	P22557
GeneID	212;
SDS-PAGE MW	64kd
Concentration	0.7mg/ml
Formulation	Rabbit IgG in pH7.4 PBS, 0.05% NaN ₃ , 40% Glycerol.
Storage	Store at -20°C

Application Details

Western blotting: 1:500-1:2000

Images



Gel: 10%SDS-PAGE
 Lysates (from left to right): 293T and Jurkat cell
 Amount of lysate: 40ug per lane
 Primary antibody: 1/1000 dilution
 Secondary antibody dilution: 1/8000
 Exposure time: 1 minute

Background

The product of this gene specifies an erythroid-specific mitochondrially located enzyme. The encoded protein catalyzes the first step in the heme biosynthetic pathway. Defects in this gene cause X-linked pyridoxine-responsive sideroblastic anemia. Alternatively spliced transcript variants

encoding different isoforms have been identified.

Note: This product is for in vitro research use only