

ALDH8A1 Antibody

Catalog No: #36078

Orders: order@signalwayantibody.com

Support: tech@signalwayantibody.com

Description

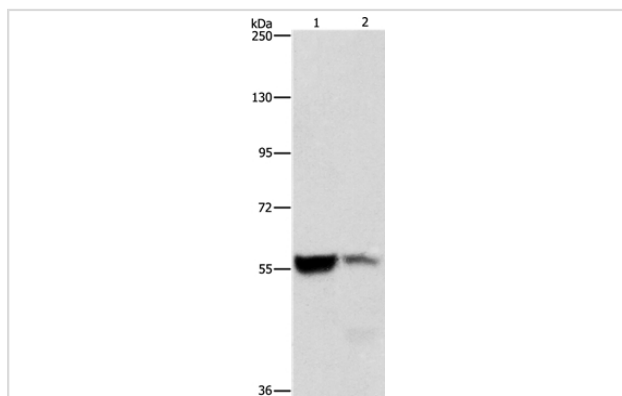
| | |
|-----------------------|---|
| Product Name | ALDH8A1 Antibody |
| Host Species | Rabbit |
| Clonality | Polyclonal |
| Purification | Antigen affinity purification. |
| Applications | WB IHC |
| Species Reactivity | Hu Ms |
| Specificity | The antibody detects endogenous levels of total ALDH8A1 protein. |
| Immunogen Type | Recombinant Protein |
| Immunogen Description | Fusion protein corresponding to a region derived from internal residues of human aldehyde dehydrogenase 8 family, member A1 |
| Target Name | ALDH8A1 |
| Other Names | ALDH12; DJ352A20.2 |
| Accession No. | Swiss-Prot#: Q9H2A2NCBI Gene ID: 64577Gene Accssion: BC113862 |
| Uniprot | Q9H2A2 |
| GeneID | 64577; |
| SDS-PAGE MW | 53kd |
| Concentration | 1.1mg/ml |
| Formulation | Rabbit IgG in pH7.4 PBS, 0.05% NaN ₃ , 40% Glycerol. |
| Storage | Store at -20°C |

Application Details

Western blotting: 1:500-1:2000

Immunohistochemistry: 1:25-1:100

Images



Gel: 8%SDS-PAGE

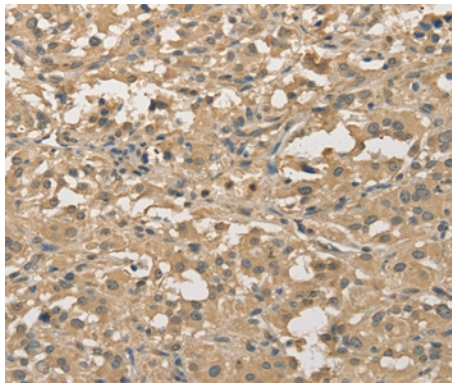
Lysates (from left to right): Mouse liver and kidney tissue

Amount of lysate: 40ug per lane

Primary antibody: 1/550 dilution

Secondary antibody dilution: 1/8000

Exposure time: 3 seconds



Immunohistochemical analysis of paraffin-embedded Human thyroid cancer tissue using #36078 at dilution 1/30.

Background

This protein belongs to the aldehyde dehydrogenases family of proteins. It plays a role in a pathway of 9-cis-retinoic acid biosynthesis in vivo. This enzyme converts 9-cis-retinal into the retinoid X receptor ligand 9-cis-retinoic acid, and has approximately 40-fold higher activity with 9-cis-retinal than with all-trans-retinal. Therefore, it is the first known aldehyde dehydrogenase to show a preference for 9-cis-retinal relative to all-trans-retinal. Three transcript variants encoding distinct protein isoforms have been identified for this gene.

Note: This product is for in vitro research use only