

## ALG8 Antibody

Catalog No: #36080

Orders: [order@signalwayantibody.com](mailto:order@signalwayantibody.com)Support: [tech@signalwayantibody.com](mailto:tech@signalwayantibody.com)

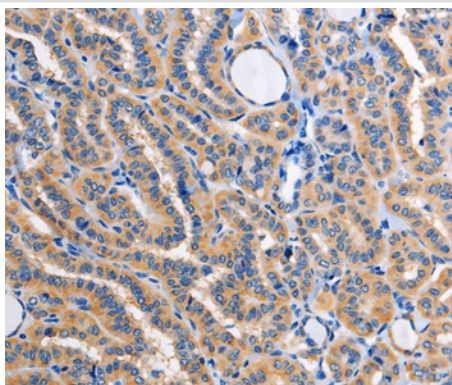
## Description

Product Name	ALG8 Antibody
Host Species	Rabbit
Clonality	Polyclonal
Purification	Antigen affinity purification.
Applications	IHC
Species Reactivity	Hu
Specificity	The antibody detects endogenous levels of total ALG8 protein.
Immunogen Type	Recombinant Protein
Immunogen Description	Fusion protein corresponding to a region derived from internal residues of human ALG8, alpha-1,3-glucosyltransferase
Target Name	ALG8
Other Names	CDG1H
Accession No.	Swiss-Prot#: Q9BVK2NCBI Gene ID: 79053Gene Accsson: BC001133
Uniprot	Q9BVK2
GeneID	79053;
Concentration	1.2mg/ml
Formulation	Rabbit IgG in pH7.4 PBS, 0.05% NaN <sub>3</sub> , 40% Glycerol.
Storage	Store at -20°C

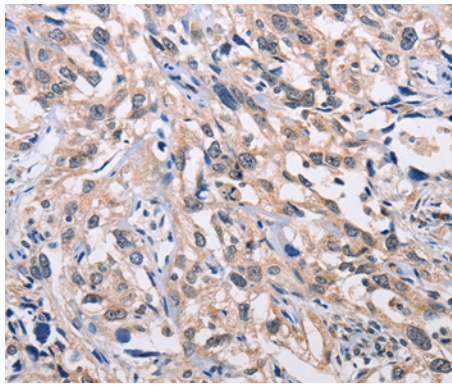
## Application Details

Immunohistochemistry: 1:25-1:100

## Images



Immunohistochemical analysis of paraffin-embedded Human esophagus cancer tissue using #36080 at dilution 1/30.



Immunohistochemical analysis of paraffin-embedded Human thyroid cancer tissue using #36080 at dilution 1/30.

## Background

This gene encodes a member of the ALG6/ALG8 glucosyltransferase family. The encoded protein catalyzes the addition of the second glucose residue to the lipid-linked oligosaccharide precursor for N-linked glycosylation of proteins. Mutations in this gene have been associated with congenital disorder of glycosylation type 1h (CDG-1h). Alternatively spliced transcript variants encoding different isoforms have been identified.

Note: This product is for in vitro research use only