

ALS2 Antibody

Catalog No: #36087

Orders: order@signalwayantibody.comSupport: tech@signalwayantibody.com

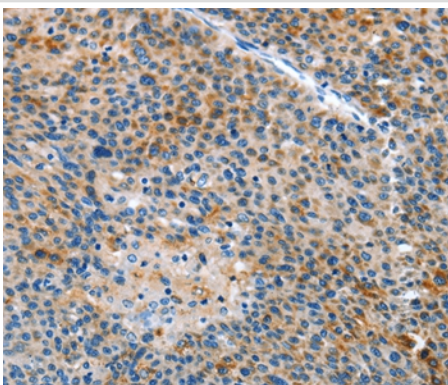
Description

Product Name	ALS2 Antibody
Host Species	Rabbit
Clonality	Polyclonal
Purification	Antigen affinity purification.
Applications	IHC
Species Reactivity	Hu
Specificity	The antibody detects endogenous levels of total ALS2 protein.
Immunogen Type	Recombinant Protein
Immunogen Description	Fusion protein corresponding to residues near the C terminal of human amyotrophic lateral sclerosis 2 (juvenile)
Target Name	ALS2
Other Names	ALSJ; PLSJ; IAHSF; ALS2CR6
Accession No.	Swiss-Prot#: Q96Q42NCBI Gene ID: 57679Gene Accssion: BC029174
Uniprot	Q96Q42
GeneID	57679;
Concentration	0.8mg/ml
Formulation	Rabbit IgG in pH7.4 PBS, 0.05% NaN ₃ , 40% Glycerol.
Storage	Store at -20°C

Application Details

Immunohistochemistry: 1:25-1:100

Images



Immunohistochemical analysis of paraffin-embedded Human liver cancer tissue using #36087 at dilution 1/25.

Background

The protein encoded by this gene contains an ATS1/RCC1-like domain, a RhoGEF domain, and a vacuolar protein sorting 9 (VPS9) domain, all of which are guanine-nucleotide exchange factors that activate members of the Ras superfamily of GTPases. The protein functions as a guanine

nucleotide exchange factor for the small GTPase RAB5. The protein localizes with RAB5 on early endosomal compartments, and functions as a modulator for endosomal dynamics. Mutations in this gene result in several forms of juvenile lateral sclerosis and infantile-onset ascending spastic paralysis. Multiple transcript variants encoding different isoforms have been found for this gene.

Note: This product is for in vitro research use only