

## NIF3L1 Antibody

Catalog No: #36088

Orders: order@signalwayantibody.com

Support: tech@signalwayantibody.com

## Description

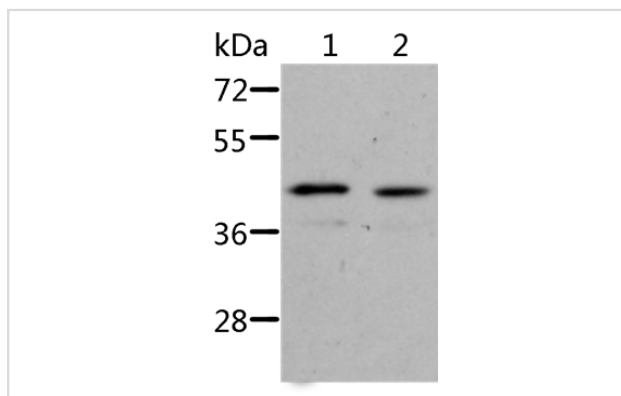
Product Name	NIF3L1 Antibody
Host Species	Rabbit
Clonality	Polyclonal
Purification	Antigen affinity purification.
Applications	WB IHC
Species Reactivity	Hu
Specificity	The antibody detects endogenous levels of total NIF3L1 protein.
Immunogen Type	Recombinant Protein
Immunogen Description	Fusion protein corresponding to a region derived from internal residues of human NIF3 NGG1 interacting factor 3-like 1 ( <i>S. cerevisiae</i> )
Target Name	NIF3L1
Other Names	CALS-7; MDS015; ALS2CR1
Accession No.	Swiss-Prot#: Q9GZT8NCBI Gene ID: 60491Gene Accssion: BC007654
Uniprot	Q9GZT8
GeneID	60491;
SDS-PAGE MW	42kd
Concentration	0.7mg/ml
Formulation	Rabbit IgG in pH7.4 PBS, 0.05% NaN <sub>3</sub> , 40% Glycerol.
Storage	Store at -20°C

## Application Details

Western blotting: 1:200-1:1000

Immunohistochemistry: 1:25-1:100

## Images



Gel: 10%SDS-PAGE

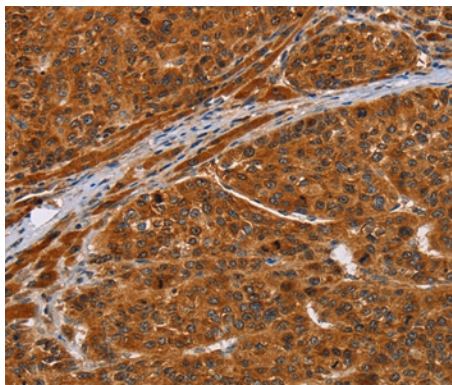
Lysates (from left to right): Jurkat cell and human fetal kidney tissue

Amount of lysate: 40ug per lane

Primary antibody: 1/500 dilution

Secondary antibody dilution: 1/8000

Exposure time: 2 minutes



Immunohistochemical analysis of paraffin-embedded Human liver cancer tissue using #36088 at dilution 1/20.

## Background

NIF3-like protein 1 is a protein that in humans is encoded by the NIF3L1 gene. NIF3L1 has been shown to interact with COPS2. Expression analysis on cell lines revealed strong overexpression in a spermatogonia-derived cell line and a teratocarcinoma cell line. A human NIF3L1/GFP fusion protein showed localization of the protein in the cytoplasm.

Note: This product is for in vitro research use only