

CARF Antibody

Catalog No: #36090

Orders: order@signalwayantibody.com

Support: tech@signalwayantibody.com

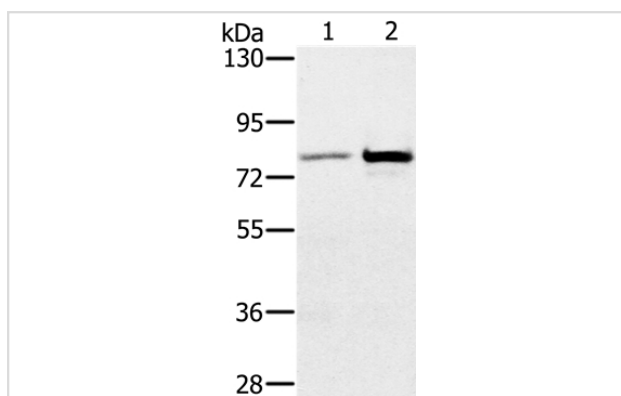
Description

Product Name	CARF Antibody
Host Species	Rabbit
Clonality	Polyclonal
Purification	Antigen affinity purification.
Applications	WB
Species Reactivity	Hu
Specificity	The antibody detects endogenous levels of total CARF protein.
Immunogen Type	Recombinant Protein
Immunogen Description	Fusion protein corresponding to residues near the C terminal of human calcium responsive transcription factor
Target Name	CARF
Other Names	ALS2CR8; NYD-SP24
Accession No.	Swiss-Prot#: Q8N187NCBI Gene ID: 79800Gene Accssion: BC033777/Q8N187
Uniprot	Q8N187
GeneID	79800;
SDS-PAGE MW	81kd
Concentration	1.2mg/ml
Formulation	Rabbit IgG in pH7.4 PBS, 0.05% NaN ₃ , 40% Glycerol.
Storage	Store at -20°C

Application Details

Western blotting: 1:200-1:1000

Images



Gel: 6%SDS-PAGE

Lysates (from left to right): Human testis tissue and K562 cell

Amount of lysate: 40ug per lane

Primary antibody: 1/300 dilution

Secondary antibody dilution: 1/8000

Exposure time: 2 minutes

Background

CARF (calcium-response factor), also known as ALS2CR8 (amyotrophic lateral sclerosis 2 chromosomal region candidate gene 8 protein) or NYD-SP24, is a 725 amino acid nuclear protein. Expressed in a wide variety of tissues with highest expression in the hippocampus, CARF is thought

to be a transcription factor that associates with the p53 tumor suppression pathway. CARF cooperates, co-localizes and is co-regulated with ARF, an ADP-ribosylation factor, and, through this interaction, helps to mediate ARF-p53-induced apoptotic signaling. This apoptotic pathway is implicated in cell cycle control, proper cellular development, response to DNA damage and the aging process, suggesting that CARF participates in various events throughout the cell.?

Note: This product is for in vitro research use only