

AUP1 Antibody

Catalog No: #36100

Orders: order@signalwayantibody.comSupport: tech@signalwayantibody.com

Description

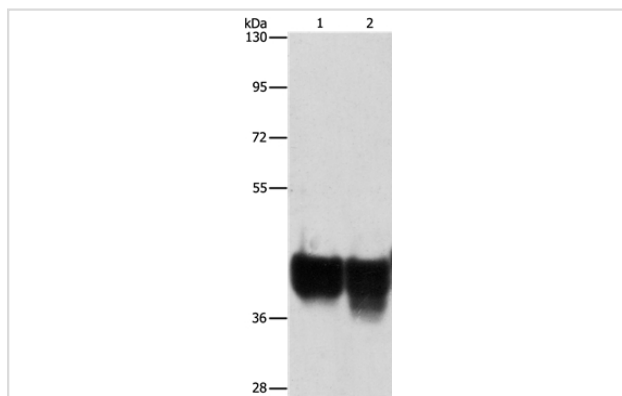
Product Name	AUP1 Antibody
Host Species	Rabbit
Clonality	Polyclonal
Purification	Antigen affinity purification.
Applications	WB IHC
Species Reactivity	Hu
Specificity	The antibody detects endogenous levels of total AUP1 protein.
Immunogen Type	Recombinant Protein
Immunogen Description	Fusion protein corresponding to residues near the C terminal of human ancient ubiquitous protein 1
Target Name	AUP1
Other Names	AUP1; Ancient ubiquitous protein 1
Accession No.	Swiss-Prot#: Q9Y679NCBI Gene ID: 550Gene Accssion: BC033646
Uniprot	Q9Y679
GeneID	550;
SDS-PAGE MW	53kd
Concentration	1.9mg/ml
Formulation	Rabbit IgG in pH7.4 PBS, 0.05% NaN ₃ , 40% Glycerol.
Storage	Store at -20°C

Application Details

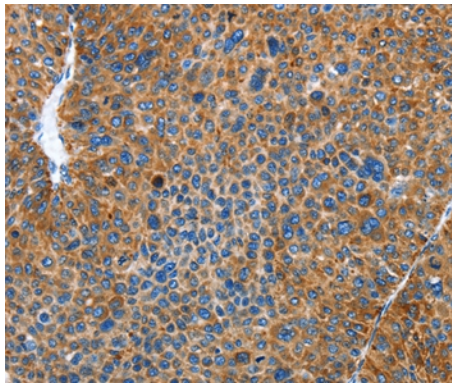
Western blotting: 1:500-1:2000

Immunohistochemistry: 1:50-1:200

Images



Gel: 8%SDS-PAGE
Lysates (from left to right): HeLa and 293T cell
Amount of lysate: 40ug per lane
Primary antibody: 1/500 dilution
Secondary antibody dilution: 1/8000
Exposure time: 30 seconds



Immunohistochemical analysis of paraffin-embedded Human liver cancer tissue using #36100 at dilution 1/50.

Background

This gene encodes a protein that contains a domain with homology to the ancient conserved region of the archaic 1 gene and a domain that may be involved in binding ubiquitin-conjugating enzymes. The protein encoded by this gene has been shown to bind to the conserved membrane-proximal sequence of the cytoplasmic tail of integrin alpha(IIb) subunits. These subunits play a crucial role in the integrin alpha(IIb)beta(3) inside-out signalling in platelets and megakaryocytes that leads to platelet aggregation and thrombus formation. This gene overlaps the gene for mitochondrial serine protease 25.

Note: This product is for in vitro research use only